

Product datasheet for **TA346525**

SGSH Rabbit Polyclonal Antibody

Product data:

Product Type:	Primary Antibodies
Applications:	WB
Recommended Dilution:	WB
Reactivity:	Human
Host:	Rabbit
Isotype:	IgG
Clonality:	Polyclonal
Immunogen:	The immunogen for Anti-SGSH antibody is: synthetic peptide directed towards the N-terminal region of Human SGSH. Synthetic peptide located within the following region: RNALLLLADDGGFESGAYNNSAIATPHLDALARRSLLFRNAFTSVSSCSP
Formulation:	Liquid. Purified antibody supplied in 1x PBS buffer with 0.09% (w/v) sodium azide and 2% sucrose. <i>Note that this product is shipped as lyophilized powder to China customers.</i>
Purification:	Affinity Purified
Conjugation:	Unconjugated
Storage:	Store at -20°C as received.
Stability:	Stable for 12 months from date of receipt.
Predicted Protein Size:	57 kDa
Gene Name:	N-sulfoglucosamine sulfohydrolase
Database Link:	NP_000190 Entrez Gene 6448 Human P51688
Background:	This gene encodes one of several enzymes involved in the lysosomal degradation of heparan sulfate. Mutations in this gene are associated with Sanfilippo syndrome A, one type of the lysosomal storage disease mucopolysaccharidosis III, which results from impaired degradation of heparan sulfate. Transcripts of varying sizes have been reported but their biological validity has not been determined. [provided by RefSeq, Jul 2008]
Synonyms:	HSS; MPS3A; SFMD



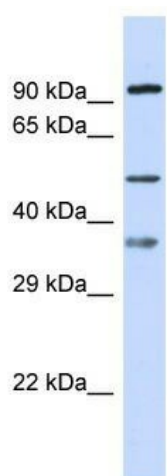
[View online »](#)

Note: Immunogen Sequence Homology: Pig: 100%; Horse: 100%; Human: 100%; Bovine: 100%; Dog: 93%; Guinea pig: 93%; Rat: 92%; Mouse: 86%

Protein Families: Druggable Genome

Protein Pathways: Glycosaminoglycan degradation, Lysosome, Metabolic pathways

Product images:



Host: Rabbit; Target Name: SGSH; Sample Tissue: 721_B Whole Cell lysates; Antibody Dilution: 1.0 ug/ml. SGSH is supported by BioGPS gene expression data to be expressed in 721_B