

Product datasheet for **TA346524**

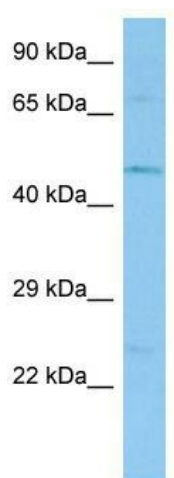
Tekt1 Rabbit Polyclonal Antibody

Product data:

Product Type:	Primary Antibodies
Applications:	WB
Recommended Dilution:	WB
Reactivity:	Mouse
Host:	Rabbit
Isotype:	IgG
Clonality:	Polyclonal
Immunogen:	The immunogen for Anti-Tekt1 antibody is: synthetic peptide directed towards the N-terminal region of Mouse Tekt1. Synthetic peptide located within the following region: EEWYIANKSQYHRAEAQRSQSERLVAESQRLVEEIEKTRKSQSDVNKKL
Formulation:	Liquid. Purified antibody supplied in 1x PBS buffer with 0.09% (w/v) sodium azide and 2% sucrose. <i>Note that this product is shipped as lyophilized powder to China customers.</i>
Purification:	Affinity Purified
Conjugation:	Unconjugated
Storage:	Store at -20°C as received.
Stability:	Stable for 12 months from date of receipt.
Predicted Protein Size:	49 kDa
Gene Name:	tektin 1
Database Link:	NP_035699 Entrez Gene 21689 Mouse Q9DAJ2
Background:	Structural component of ciliary and flagellar microtubules. Forms filamentous polymers in the walls of ciliary and flagellar microtubules.
Synonyms:	MT14
Note:	Immunogen Sequence Homology: Dog: 100%; Rat: 100%; Horse: 100%; Human: 100%; Mouse: 100%; Bovine: 100%; Rabbit: 100%; Pig: 86%; Guinea pig: 86%



[View online »](#)

Product images:

Host: Rabbit; Target Name: Tekt1; Sample Tissue: Mouse Stomach lysates; Antibody Dilution: 1.0 ug/ml