

Product datasheet for **TA346523**

SLC14A1 Rabbit Polyclonal Antibody

Product data:

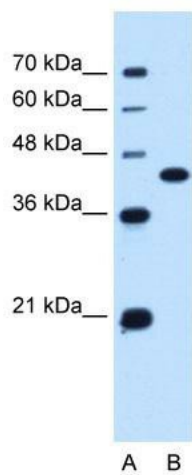
Product Type:	Primary Antibodies
Applications:	IHC, WB
Recommended Dilution:	WB, IHC
Reactivity:	Human
Host:	Rabbit
Isotype:	IgG
Clonality:	Polyclonal
Immunogen:	The immunogen for anti-SLC14A1 antibody: synthetic peptide directed towards the C terminal of human SLC14A1. Synthetic peptide located within the following region: LSSPLMCLHAAIGSLLGIAAGLSLAPFENIYFGLWGFNSSLACIAMGGM
Formulation:	Liquid. Purified antibody supplied in 1x PBS buffer with 0.09% (w/v) sodium azide and 2% sucrose. <i>Note that this product is shipped as lyophilized powder to China customers.</i>
Purification:	Affinity Purified
Conjugation:	Unconjugated
Storage:	Store at -20°C as received.
Stability:	Stable for 12 months from date of receipt.
Predicted Protein Size:	42 kDa
Gene Name:	solute carrier family 14 member 1 (Kidd blood group)
Database Link:	NP_056949 Entrez Gene 6563 Human Q13336
Background:	The protein encoded by this gene is a membrane transporter that mediates urea transport in erythrocytes. This gene forms the basis for the Kidd blood group system. [provided by RefSeq, Mar 2009]
Synonyms:	HsT1341; HUT11; JK; RACH1; RACH2; UT-B1; UT1; UTE
Note:	Immunogen Sequence Homology: Human: 100%; Dog: 93%; Pig: 93%; Goat: 93%; Sheep: 93%; Bovine: 86%; Horse: 83%; Mouse: 83%



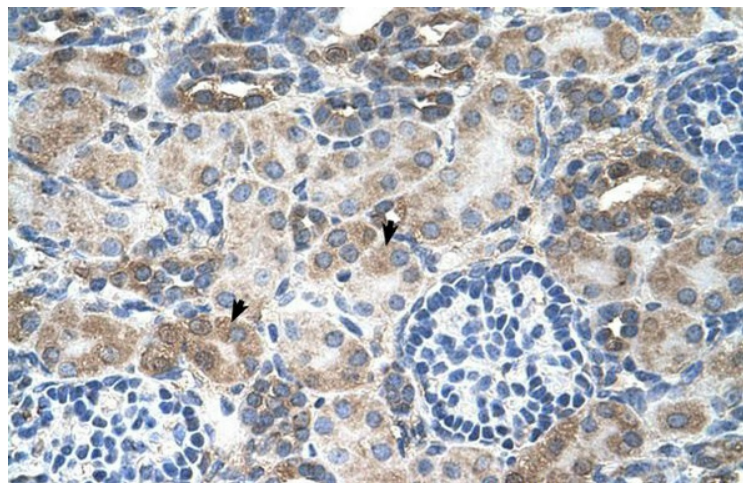
[View online »](#)

Protein Families: Transmembrane

Product images:



WB Suggested Anti-SLC14A1 Antibody Titration:
0.25 ug/ml; Positive Control: Jurkat cell lysate



Human kidney