

Product datasheet for TA346522

RNASE9 Rabbit Polyclonal Antibody

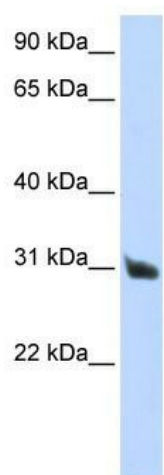
Product data:

Product Type:	Primary Antibodies
Applications:	WB
Recommended Dilution:	WB
Reactivity:	Human
Host:	Rabbit
Isotype:	IgG
Clonality:	Polyclonal
Immunogen:	The immunogen for anti-RNASE9 antibody: synthetic peptide directed towards the N terminal of human RNASE9. Synthetic peptide located within the following region: PEEDKKEEFEECLEKFFSTGPARPPTKEKVKRRVLIIEPGMPLNHIEYCNH
Formulation:	Liquid. Purified antibody supplied in 1x PBS buffer with 0.09% (w/v) sodium azide and 2% sucrose. <i>Note that this product is shipped as lyophilized powder to China customers.</i>
Purification:	Affinity Purified
Conjugation:	Unconjugated
Storage:	Store at -20°C as received.
Stability:	Stable for 12 months from date of receipt.
Predicted Protein Size:	24 kDa
Gene Name:	ribonuclease A family member 9 (inactive)
Database Link:	NP_001001673 Entrez Gene 390443 Human P60153
Background:	RNASE9 belongs to the pancreatic ribonuclease family. It may be involved in host defense.
Synonyms:	h461; HEL128; RAK1
Note:	Immunogen Sequence Homology: Human: 100%; Pig: 86%
Protein Families:	Secreted Protein



[View online »](#)

Product images:



WB Suggested Anti-RNASE9 Antibody Titration:
0.2-1 ug/ml; ELISA Titer: 1: 62500; Positive
Control: Human Placenta