

## Product datasheet for **TA346520**

### **PAX8 Rabbit Polyclonal Antibody**

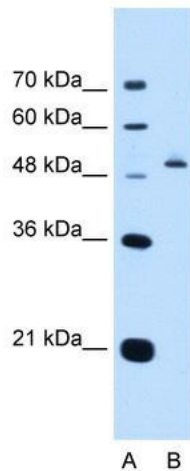
#### **Product data:**

Product Type:	Primary Antibodies
Applications:	WB
Recommended Dilution:	WB
Reactivity:	Human
Host:	Rabbit
Isotype:	IgG
Clonality:	Polyclonal
Immunogen:	The immunogen for anti-PAX8 antibody: synthetic peptide directed towards the N terminal of human PAX8. Synthetic peptide located within the following region: KSLSPGHTLIPSSAVTPPEPQSDSLGSTYSINGLLGIAQPGSDKRKMD
Formulation:	Liquid. Purified antibody supplied in 1x PBS buffer with 0.09% (w/v) sodium azide and 2% sucrose. <i>Note that this product is shipped as lyophilized powder to China customers.</i>
Purification:	Affinity Purified
Conjugation:	Unconjugated
Storage:	Store at -20°C as received.
Stability:	Stable for 12 months from date of receipt.
Predicted Protein Size:	48 kDa
Gene Name:	paired box 8
Database Link:	<a href="#">NP_003457</a> <a href="#">Entrez Gene 7849 Human</a> <a href="#">Q06710</a>



[View online »](#)

- Background:** This gene encodes a member of the paired box (PAX) family of transcription factors. Members of this gene family typically encode proteins that contain a paired box domain, an octapeptide, and a paired-type homeodomain. This nuclear protein is involved in thyroid follicular cell development and expression of thyroid-specific genes. Mutations in this gene have been associated with thyroid dysgenesis, thyroid follicular carcinomas and atypical follicular thyroid adenomas. Alternatively spliced transcript variants encoding different isoforms have been described. [provided by RefSeq, Mar 2010]
- Synonyms:** OTTHUMP00000158659; OTTHUMP00000158660; paired box 8; paired domain gene 8
- Note:** Immunogen Sequence Homology: Dog: 100%; Pig: 100%; Rat: 100%; Horse: 100%; Human: 100%; Mouse: 100%; Bovine: 100%; Rabbit: 100%; Zebrafish: 100%; Guinea pig: 100%
- Protein Families:** Druggable Genome, Transcription Factors
- Protein Pathways:** Pathways in cancer, Thyroid cancer
- Product images:**



WB Suggested Anti-PAX8 Antibody Titration: 0.2-1 ug/ml; Positive Control: HepG2 cell lysate