

Product datasheet for **TA346518**

Zinc transporter 8 (SLC30A8) Rabbit Polyclonal Antibody

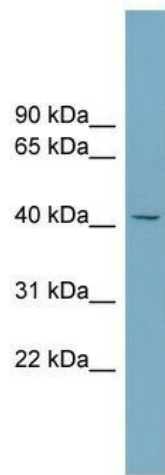
Product data:

Product Type:	Primary Antibodies
Applications:	WB
Recommended Dilution:	WB
Reactivity:	Human
Host:	Rabbit
Isotype:	IgG
Clonality:	Polyclonal
Immunogen:	The immunogen for anti-SLC30A8 antibody: synthetic peptide directed towards the middle region of human SLC30A8. Synthetic peptide located within the following region: LLIDLTSFLLSLFSLWLSSKPPSKRLTFGWHRAEILGALLSILCIWVVTG
Formulation:	Liquid. Purified antibody supplied in 1x PBS buffer with 0.09% (w/v) sodium azide and 2% sucrose. <i>Note that this product is shipped as lyophilized powder to China customers.</i>
Purification:	Affinity Purified
Conjugation:	Unconjugated
Storage:	Store at -20°C as received.
Stability:	Stable for 12 months from date of receipt.
Predicted Protein Size:	41 kDa
Gene Name:	solute carrier family 30 member 8
Database Link:	NP_776250 Entrez Gene 169026 Human Q8IWU4



[View online »](#)

Background:	The protein encoded by this gene is a zinc efflux transporter involved in the accumulation of zinc in intracellular vesicles. This gene is expressed at a high level only in the pancreas, particularly in islets of Langerhans. The encoded protein colocalizes with insulin in the secretory pathway granules of the insulin-secreting INS-1 cells. Allelic variants of this gene exist that confer susceptibility to diabetes mellitus, noninsulin-dependent (NIDDM). Several transcript variants encoding different isoforms have been found for this gene. [provided by RefSeq, Mar 2010]
Synonyms:	ZnT-8; ZNT8
Note:	Immunogen Sequence Homology: Pig: 100%; Horse: 100%; Human: 100%; Dog: 93%; Rat: 93%; Mouse: 93%; Rabbit: 93%; Bovine: 82%; Zebrafish: 75%
Protein Families:	Transmembrane

Product images:

WB Suggested Anti-SLC30A8 Antibody Titration:
0.2-1 ug/ml; Positive Control: NCI-H226 cell lysate