

Product datasheet for **TA346517**

SELS (SELENOS) Rabbit Polyclonal Antibody

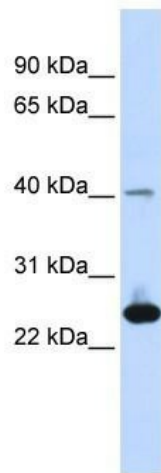
Product data:

Product Type:	Primary Antibodies
Applications:	WB
Recommended Dilution:	WB
Reactivity:	Human
Host:	Rabbit
Isotype:	IgG
Clonality:	Polyclonal
Immunogen:	The immunogen for anti-SELS antibody: synthetic peptide directed towards the middle region of human SELS. Synthetic peptide located within the following region: PDVVVKRQEALAAARLKMQEELNAQVEKHKEKQLEEEKRRQKIEMWDS
Formulation:	Liquid. Purified antibody supplied in 1x PBS buffer with 0.09% (w/v) sodium azide and 2% sucrose.
Purification:	Affinity Purified
Conjugation:	Unconjugated
Storage:	Store at -20°C as received.
Stability:	Stable for 12 months from date of receipt.
Predicted Protein Size:	21 kDa
Gene Name:	VCP interacting membrane selenoprotein
Database Link:	NP_060915 Entrez Gene 55829 Human Q9BQE4



[View online »](#)

- Background:** This gene encodes a member of the selenoprotein family, characterized by a selenocysteine (Sec) residue at the active site. The selenocysteine is encoded by the UGA codon that normally signals translation termination. The 3' UTR of selenoprotein genes have a common stem-loop structure, the sec insertion sequence (SECIS), that is necessary for the recognition of UGA as a Sec codon rather than as a stop signal. Studies suggest that this protein may regulate cytokine production, and thus play a key role in the control of the inflammatory response. Alternative splicing results in multiple transcript variants encoding different isoforms. [provided by RefSeq, Sep 2013]
- Synonyms:** AD-015; ADO15; SBB18; SELS; SEPS1
- Note:** Immunogen Sequence Homology: Human: 100%; Zebrafish: 100%; Pig: 93%; Rat: 93%; Horse: 93%; Mouse: 93%; Bovine: 93%; Guinea pig: 93%; Rabbit: 92%; Yeast: 90%; Dog: 86%; Goat: 75%
- Protein Families:** Druggable Genome

Product images:

WB Suggested Anti-SELS Antibody Titration: 0.2-1 ug/ml; ELISA Titer: 1: 312500; Positive Control: Human Muscle