

## Product datasheet for **TA346516**

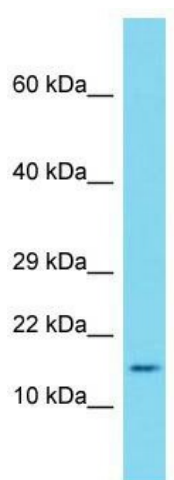
### Saa1 Rabbit Polyclonal Antibody

#### Product data:

Product Type:	Primary Antibodies
Applications:	WB
Recommended Dilution:	WB
Reactivity:	Mouse
Host:	Rabbit
Isotype:	IgG
Clonality:	Polyclonal
Immunogen:	The immunogen for Anti-Saa1 antibody is: synthetic peptide directed towards the middle region of Mouse Saa1. Synthetic peptide located within the following region: DKYFHARGNYDAAQRGPGGWAAEKISDGREAFQEFFGRGHEDTIADQEA
Formulation:	Liquid. Purified antibody supplied in 1x PBS buffer with 0.09% (w/v) sodium azide and 2% sucrose. <i>Note that this product is shipped as lyophilized powder to China customers.</i>
Purification:	Affinity Purified
Conjugation:	Unconjugated
Storage:	Store at -20°C as received.
Stability:	Stable for 12 months from date of receipt.
Predicted Protein Size:	14 kDa
Gene Name:	serum amyloid A 1
Database Link:	<a href="#">NP_033143</a> <a href="#">Entrez Gene 20208 Mouse P05366</a>
Background:	Saa1 is a major acute phase reactant and apolipoprotein of the HDL complex.
Synonyms:	MGC111216; PIG4; SAA; TP5314
Note:	Immunogen Sequence Homology: Rat: 100%; Horse: 100%; Human: 100%; Rabbit: 100%; Dog: 93%; Pig: 93%; Goat: 93%; Mouse: 93%; Bovine: 93%; Sheep: 92%; Guinea pig: 92%; Zebrafish: 85%



[View online »](#)

**Product images:**

Host: Rabbit; Target Name: Saa1; Sample Tissue: Mouse Thymus lysates; Antibody Dilution: 2.0 ug/ml