

Product datasheet for **TA346512**

EIF4A1 Rabbit Polyclonal Antibody

Product data:

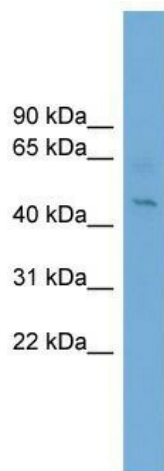
Product Type:	Primary Antibodies
Applications:	WB
Recommended Dilution:	WB
Reactivity:	Human
Host:	Rabbit
Isotype:	IgG
Clonality:	Polyclonal
Immunogen:	The immunogen for anti-EIF4A1 antibody: synthetic peptide directed towards the middle region of human EIF4A1. Synthetic peptide located within the following region: TMPSDVLEVTKKFMRDPIRILVKKEELTLEGIRQFYINVEREEWKLDLTC
Formulation:	Liquid. Purified antibody supplied in 1x PBS buffer with 0.09% (w/v) sodium azide and 2% sucrose. <i>Note that this product is shipped as lyophilized powder to China customers.</i>
Purification:	Affinity Purified
Conjugation:	Unconjugated
Storage:	Store at -20°C as received.
Stability:	Stable for 12 months from date of receipt.
Predicted Protein Size:	46
Gene Name:	eukaryotic translation initiation factor 4A1
Database Link:	NP_001407 Entrez Gene 1973 Human P60842
Background:	EIF4A1 is an ATP-dependent RNA helicase which is a subunit of the eIF4F complex involved in cap recognition and is required for mRNA binding to ribosome. In the current model of translation initiation, eIF4A unwinds RNA secondary structures in the 5'-UTR of mRNAs which is necessary to allow efficient binding of the small ribosomal subunit, and subsequent scanning for the initiator codon.
Synonyms:	DDX2A; EIF-4A; eIF-4A-I; EIF4A; eIF4A-I



[View online »](#)

Note: Immunogen Sequence Homology: Dog: 100%; Pig: 100%; Rat: 100%; Horse: 100%; Human: 100%; Mouse: 100%; Bovine: 100%; Rabbit: 100%; Zebrafish: 100%; Guinea pig: 100%; Sheep: 93%; Yeast: 92%

Product images:



WB Suggested Anti-EIF4A1 Antibody Titration: 0.2-1 ug/ml; ELISA Titer: 1: 12500; Positive Control: 721_B cell lysate. EIF4A1 is strongly supported by BioGPS gene expression data to be expressed in Human 721_B cells