

Product datasheet for **TA346510**

Akt1s1 Rabbit Polyclonal Antibody

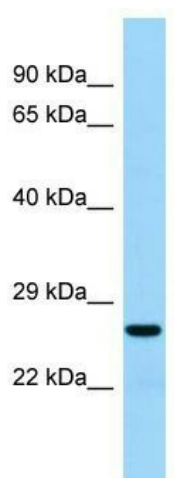
Product data:

| | |
|-------------------------|---|
| Product Type: | Primary Antibodies |
| Applications: | WB |
| Recommended Dilution: | WB |
| Reactivity: | Rat |
| Host: | Rabbit |
| Isotype: | IgG |
| Clonality: | Polyclonal |
| Immunogen: | The immunogen for Anti-Akt1s1 antibody is: synthetic peptide directed towards the middle region of Rat Akt1s1. Synthetic peptide located within the following region: DEEDEDEPTETETSGERLGGSDNGGLFMMDEDATLQDLPPFCESDPESTD |
| Formulation: | Liquid. Purified antibody supplied in 1x PBS buffer with 0.09% (w/v) sodium azide and 2% sucrose. <i>Note that this product is shipped as lyophilized powder to China customers.</i> |
| Purification: | Affinity Purified |
| Conjugation: | Unconjugated |
| Storage: | Store at -20°C as received. |
| Stability: | Stable for 12 months from date of receipt. |
| Predicted Protein Size: | 28 kDa |
| Gene Name: | AKT1 substrate 1 |
| Database Link: | NP_001099729 Entrez Gene 292887 Rat |
| Background: | The function of this protein remains unknown. |
| Synonyms: | Lobe; MGC2865; OTTHUMP00000196759; OTTHUMP00000196760; PRAS40 |
| Note: | Immunogen Sequence Homology: Pig: 100%; Rat: 100%; Horse: 100%; Human: 100%; Mouse: 100%; Bovine: 100%; Guinea pig: 93%; Dog: 86%; Rabbit: 77% |



[View online »](#)

Product images:



Host: Rabbit; Target Name: Akt1s1; Sample
Tissue: Rat Thymus lysates; Antibody Dilution: 1.0
ug/ml