

## Product datasheet for **TA346509**

### PRAS40 (AKT1S1) Rabbit Polyclonal Antibody

#### Product data:

Product Type:	Primary Antibodies
Applications:	WB
Recommended Dilution:	WB
Reactivity:	Human
Host:	Rabbit
Isotype:	IgG
Clonality:	Polyclonal
Immunogen:	The immunogen for anti-AKT1S1 antibody: synthetic peptide directed towards the C terminal of human AKT1S1. Synthetic peptide located within the following region: KSLPVSVPVWGFKEKRTEARSSDEENGPPSSPDLDRIAASMRALVLR EAE
Formulation:	Liquid. Purified antibody supplied in 1x PBS buffer with 0.09% (w/v) sodium azide and 2% sucrose. <i>Note that this product is shipped as lyophilized powder to China customers.</i>
Purification:	Affinity Purified
Conjugation:	Unconjugated
Storage:	Store at -20°C as received.
Stability:	Stable for 12 months from date of receipt.
Predicted Protein Size:	27 kDa
Gene Name:	AKT1 substrate 1
Database Link:	<a href="#">NP_115751</a> <a href="#">Entrez Gene 84335 Human</a> <a href="#">Q96B36</a>



[View online »](#)

**Background:**

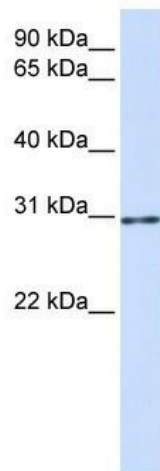
AKT1S1 is a proline-rich substrate of AKT (MIM 164730) that binds 14-3-3 protein (see YWHAH, MIM 113508) when phosphorylated (Kovacina et al., 2003 [PubMed 12524439]). [supplied by OMIM, Mar 2008]. Transcript Variant: This variant (5) differs in the 5' UTR and coding sequence compared to variant 1. The resulting isoform (b) is shorter at the N-terminus compared to isoform a. Variants 2, 3, 4, and 5 encode the same isoform (b). Publication Note: This RefSeq record includes a subset of the publications that are available for this gene. Please see the Gene record to access additional publications. ##Evidence-Data-START## CDS exon combination :: BC007416.2, BC022241.1 [ECO:0000331] RNAseq introns :: single sample supports all introns ERS025093 [ECO:0000348] ##Evidence-Data-END## COMPLETENESS: complete on the 3' end.

**Synonyms:**

Lobe; PRAS40

**Note:**

Immunogen Sequence Homology: Pig: 100%; Rat: 100%; Horse: 100%; Human: 100%; Mouse: 100%; Bovine: 100%; Guinea pig: 100%; Dog: 93%

**Product images:**

WB Suggested Anti-AKT1S1 Antibody Titration:  
0.2-1 ug/ml; ELISA Titer: 1: 62500; Positive  
Control: 293T cell lysate