

Product datasheet for **TA346507**

ST14 Rabbit Polyclonal Antibody

Product data:

Product Type:	Primary Antibodies
Applications:	IHC, WB
Recommended Dilution:	WB, IHC
Reactivity:	Human
Host:	Rabbit
Isotype:	IgG
Clonality:	Polyclonal
Immunogen:	The immunogen for anti-ST14 antibody: synthetic peptide directed towards the C terminal of human ST14. Synthetic peptide located within the following region: SHVFPAGKAIWVTGWGHTQYGGTGALILQKGEIRVINQTTCCENLLPQQIT
Formulation:	Liquid. Purified antibody supplied in 1x PBS buffer with 0.09% (w/v) sodium azide and 2% sucrose. <i>Note that this product is shipped as lyophilized powder to China customers.</i>
Purification:	Affinity Purified
Conjugation:	Unconjugated
Storage:	Store at -20°C as received.
Stability:	Stable for 12 months from date of receipt.
Predicted Protein Size:	95 kDa
Gene Name:	suppression of tumorigenicity 14
Database Link:	NP_068813 Entrez Gene 6768 Human Q9Y5Y6



[View online »](#)

Background:

The protein encoded by this gene is an epithelial-derived, integral membrane serine protease. This protease forms a complex with the Kunitz-type serine protease inhibitor, HAI-1, and is found to be activated by sphingosine 1-phosphate. This protease has been shown to cleave and activate hepatocyte growth factor/scattering factor, and urokinase plasminogen activator, which suggest the function of this protease as an epithelial membrane activator for other proteases and latent growth factors. The expression of this protease has been associated with breast, colon, prostate, and ovarian tumors, which implicates its role in cancer invasion, and metastasis. [provided by RefSeq, Jul 2008]

Synonyms:

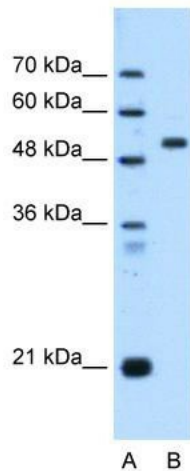
ARCI11; HAI; MT-SP1; MTSP1; PRSS14; SNC19; TADG15; TMPRSS14

Note:

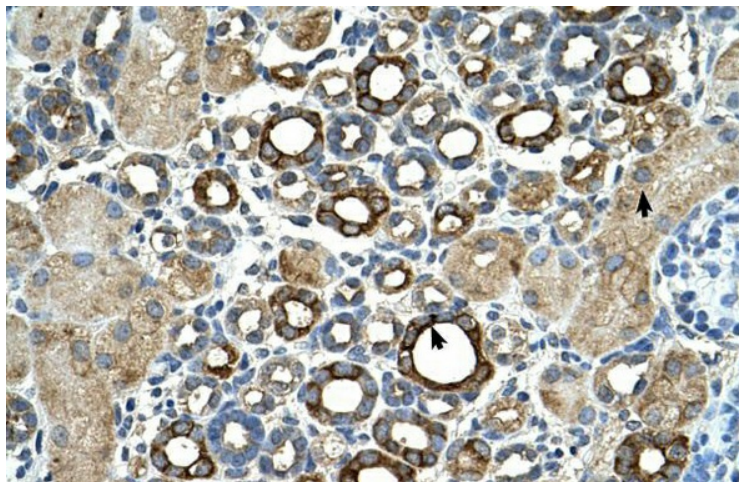
Immunogen Sequence Homology: Pig: 100%; Rat: 100%; Horse: 100%; Human: 100%; Mouse: 100%; Bovine: 100%; Dog: 93%; Rabbit: 93%; Guinea pig: 93%

Protein Families:

Druggable Genome, Protease, Transmembrane

Product images:


WB Suggested Anti-ST14 Antibody Titration: 0.25 ug/ml; Positive Control: DLD1 cell lysate. ST14 is strongly supported by BioGPS gene expression data to be expressed in Human DLD1 cells



Human kidney