

## Product datasheet for **TA346502**

### REC8 Rabbit Polyclonal Antibody

#### Product data:

Product Type:	Primary Antibodies
Applications:	WB
Recommended Dilution:	WB
Reactivity:	Human
Host:	Rabbit
Isotype:	IgG
Clonality:	Polyclonal
Immunogen:	The immunogen for anti-REC8 antibody: synthetic peptide directed towards the N terminal of human REC8. Synthetic peptide located within the following region: QLQIGVIRVYSQQCQYLVEDIQHILERLHRAQLQIRIDMETELPSLLLPN
Formulation:	Liquid. Purified antibody supplied in 1x PBS buffer with 0.09% (w/v) sodium azide and 2% sucrose. <i>Note that this product is shipped as lyophilized powder to China customers.</i>
Purification:	Affinity Purified
Conjugation:	Unconjugated
Storage:	Store at -20°C as received.
Stability:	Stable for 12 months from date of receipt.
Predicted Protein Size:	62 kDa
Gene Name:	REC8 meiotic recombination protein
Database Link:	<a href="#">NP_005123</a> <a href="#">Entrez Gene 9985 Human</a> <a href="#">O95072</a>



[View online »](#)

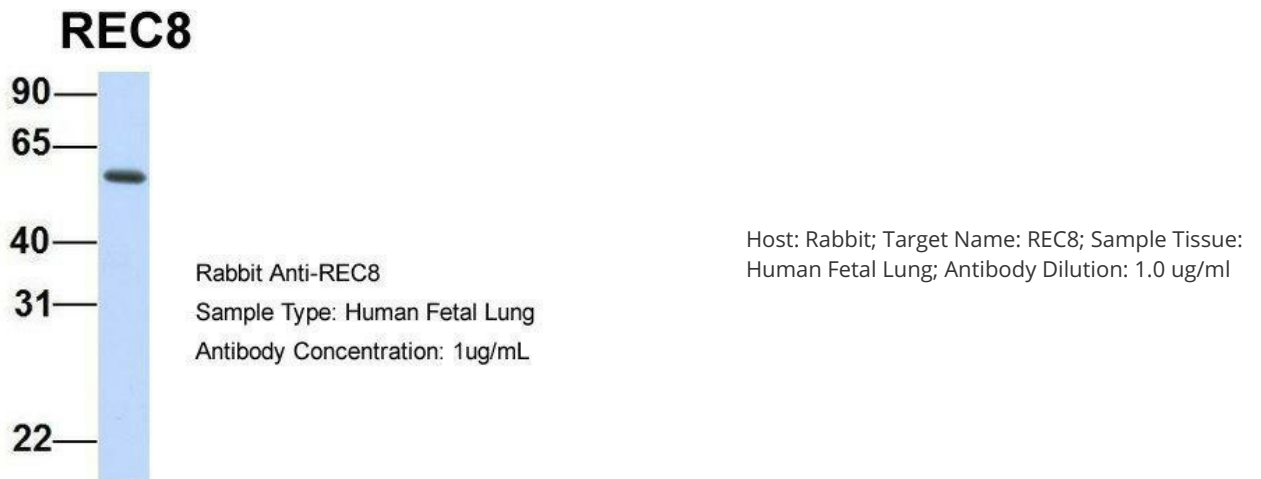
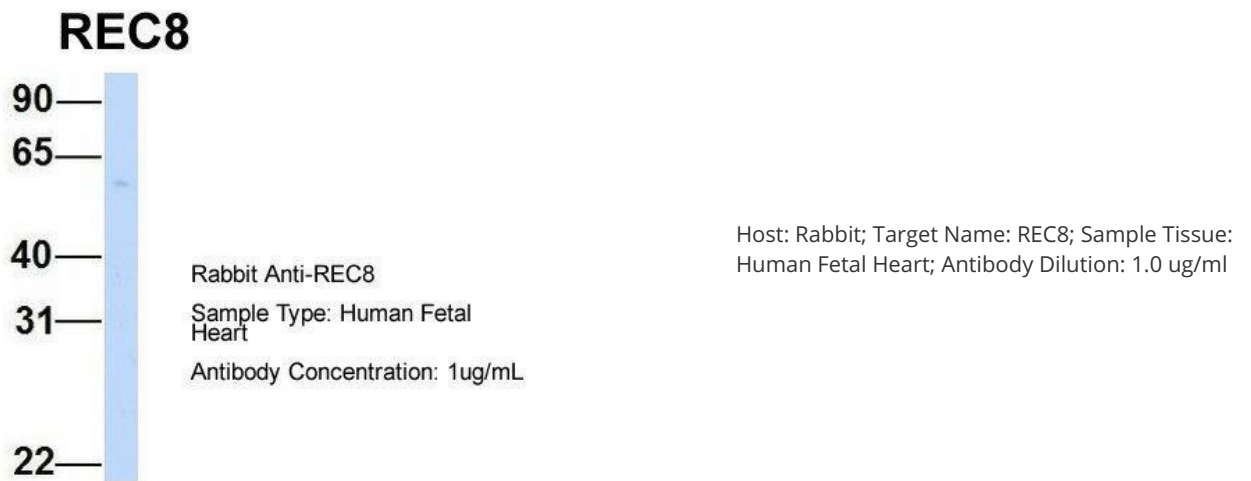
**Background:** This gene encodes a member of the kleisin family of SMC (structural maintenance of chromosome) protein partners. The protein localizes to the axial elements of chromosomes during meiosis in both oocytes and spermatocytes. In the mouse, the homologous protein is a key component of the meiotic cohesion complex, which regulates sister chromatid cohesion and recombination between homologous chromosomes. Multiple alternatively spliced variants, encoding the same protein, have been found for this gene. [provided by RefSeq, Jul 2008]

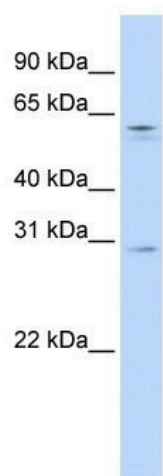
**Synonyms:** HR21spB; REC8L1; Rec8p

**Note:** Immunogen Sequence Homology: Dog: 100%; Pig: 100%; Rat: 100%; Horse: 100%; Human: 100%; Bovine: 100%; Guinea pig: 100%; Mouse: 93%

**Protein Pathways:** Oocyte meiosis

**Product images:**





WB Suggested Anti-REC8 Antibody Titration: 0.2-1 ug/ml; ELISA Titer: 1: 1562500; Positive Control: 721\_B cell lysate. REC8 is supported by BioGPS gene expression data to be expressed in 721\_B