

Product datasheet for **TA346501**

PPP2R5A Rabbit Polyclonal Antibody

Product data:

Product Type:	Primary Antibodies
Applications:	WB
Recommended Dilution:	WB
Reactivity:	Human
Host:	Rabbit
Isotype:	IgG
Clonality:	Polyclonal
Immunogen:	The immunogen for anti-PPP2R5A antibody: synthetic peptide directed towards the N terminal of human PPP2R5A. Synthetic peptide located within the following region: YVSTNRGVIVESAYS <div style="font-family: monospace; font-size: 0.8em;">DIVKMISANIFRTLPPSDNPDFDPEEDEPTLEASW</div>
Formulation:	Liquid. Purified antibody supplied in 1x PBS buffer with 0.09% (w/v) sodium azide and 2% sucrose. <i>Note that this product is shipped as lyophilized powder to China customers.</i>
Purification:	Affinity Purified
Conjugation:	Unconjugated
Storage:	Store at -20°C as received.
Stability:	Stable for 12 months from date of receipt.
Predicted Protein Size:	56 kDa
Gene Name:	protein phosphatase 2 regulatory subunit B'alpha
Database Link:	NP_006234 Entrez Gene 5525 Human Q15172



[View online »](#)

Background: The product of this gene belongs to the phosphatase 2A regulatory subunit B family. Protein phosphatase 2A is one of the four major Ser/Thr phosphatases, and it is implicated in the negative control of cell growth and division. It consists of a common heteromeric core enzyme, which is composed of a catalytic subunit and a constant regulatory subunit, that associates with a variety of regulatory subunits. The B regulatory subunit might modulate substrate selectivity and catalytic activity. This gene encodes an alpha isoform of the regulatory subunit B56 subfamily. Alternative transcript variants encoding distinct isoforms have been found for this gene. [provided by RefSeq, Dec 2010]

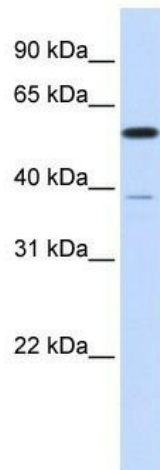
Synonyms: B56A; PR61A

Note: Immunogen Sequence Homology: Dog: 100%; Pig: 100%; Rat: 100%; Horse: 100%; Human: 100%; Mouse: 100%; Bovine: 100%; Rabbit: 100%; Guinea pig: 100%; Zebrafish: 93%; Goat: 86%

Protein Families: Druggable Genome, Phosphatase

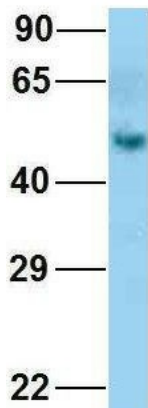
Protein Pathways: Oocyte meiosis, Wnt signaling pathway

Product images:



WB Suggested Anti-PPP2R5A Antibody Titration:
0.2-1 ug/ml; ELISA Titer: 1: 12500; Positive
Control: Transfected 293T

PPP2R5A



Rabbit Anti-PPP2R5A
Sample Type: Human Fetal Liver
Antibody Concentration: 1ug/mL

Host: Rabbit; Target Name: PPP2R5A; Sample
Tissue: Human Fetal Liver; Antibody Dilution: 1.0
ug/ml