

## Product datasheet for **TA346500**

### Nexilin (NEXN) Rabbit Polyclonal Antibody

#### Product data:

Product Type:	Primary Antibodies
Applications:	WB
Recommended Dilution:	WB
Reactivity:	Human
Host:	Rabbit
Isotype:	IgG
Clonality:	Polyclonal
Immunogen:	The immunogen for anti-NEXN antibody: synthetic peptide directed towards the middle region of human NEXN. Synthetic peptide located within the following region: EELERQRQENRKKQAESEEARKRLEEEKRAFEERARRQMVNEDEENQDTAKI
Formulation:	Liquid. Purified antibody supplied in 1x PBS buffer with 0.09% (w/v) sodium azide and 2% sucrose. <i>Note that this product is shipped as lyophilized powder to China customers.</i>
Purification:	Affinity Purified
Conjugation:	Unconjugated
Storage:	Store at -20°C as received.
Stability:	Stable for 12 months from date of receipt.
Predicted Protein Size:	81 kDa
Gene Name:	nexilin F-actin binding protein
Database Link:	<a href="#">NP_653174</a> <a href="#">Entrez Gene 91624 Human Q0ZGT2</a>
Background:	This gene encodes a filamentous actin-binding protein that may function in cell adhesion and migration. Mutations in this gene have been associated with dilated cardiomyopathy, also known as CMD1CC. Alternatively spliced transcript variants have been described. [provided by RefSeq, Feb 2010]
Synonyms:	CMH20; NELIN

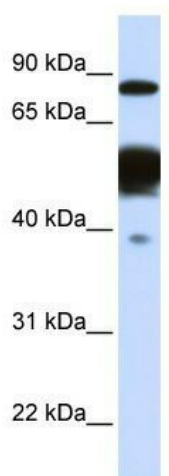


[View online »](#)

**Note:** Immunogen Sequence Homology: Rat: 100%; Human: 100%; Mouse: 100%; Rabbit: 100%; Pig: 93%; Horse: 93%; Bovine: 93%; Guinea pig: 93%; Dog: 86%

**Protein Families:** Druggable Genome

**Product images:**



WB Suggested Anti-NEXN Antibody Titration: 0.2-1 ug/ml; ELISA Titer: 1: 312500; Positive Control: Human Liver