

Product datasheet for **TA346498**

GAS8 Rabbit Polyclonal Antibody

Product data:

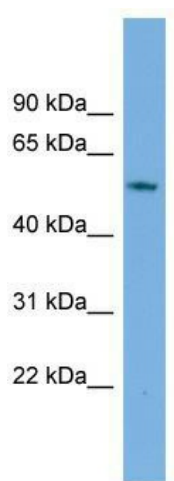
Product Type:	Primary Antibodies
Applications:	IHC, WB
Recommended Dilution:	IHC, WB
Reactivity:	Human
Host:	Rabbit
Isotype:	IgG
Clonality:	Polyclonal
Immunogen:	The immunogen for anti-GAS8 antibody: synthetic peptide directed towards the middle region of human GAS8. Synthetic peptide located within the following region: RALKVELKEQELASEVVKNLRLKHTTEITRMRNDFERQVREIEAKYDKK
Formulation:	Liquid. Purified antibody supplied in 1x PBS buffer with 0.09% (w/v) sodium azide and 2% sucrose.
Purification:	Affinity Purified
Conjugation:	Unconjugated
Storage:	Store at -20°C as received.
Stability:	Stable for 12 months from date of receipt.
Predicted Protein Size:	56 kDa
Gene Name:	growth arrest specific 8
Database Link:	NP_001472 Entrez Gene 2622 Human O95995
Background:	This gene includes 11 exons spanning 25 kb and maps to a region of chromosome 16 that is sometimes deleted in breast and prostate cancer. The second intron contains an apparently intronless gene, C16orf3, that is transcribed in the opposite orientation. This gene is a putative tumor suppressor gene. Several transcript variants encoding different isoforms have been found for this gene. [provided by RefSeq, Oct 2013]
Synonyms:	CILD33; DRC4; GAS11



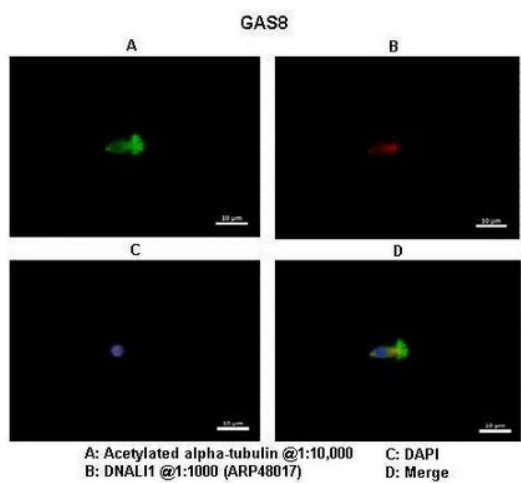
[View online »](#)

Note: Immunogen Sequence Homology: Dog: 100%; Pig: 100%; Rat: 100%; Horse: 100%; Human: 100%; Mouse: 100%; Bovine: 100%; Rabbit: 93%; Guinea pig: 93%

Product images:



WB Suggested Anti-GAS8 Antibody Titration: 0.2-1 ug/ml; ELISA Titer: 1: 62500; Positive Control: THP-1 cell lysate



Application: IHC; Species+tissue/cell type: Human nasal epithelial cells; Primary antibody dilution: 1: 1200; Secondary antibody: Goat anti-rabbit Alexa Fluor 546; Secondary antibody dilution: 1: 1000