

Product datasheet for **TA346496**

DKK1 Rabbit Polyclonal Antibody

Product data:

Product Type:	Primary Antibodies
Applications:	WB
Recommended Dilution:	WB
Reactivity:	Human
Host:	Rabbit
Isotype:	IgG
Clonality:	Polyclonal
Immunogen:	The immunogen for anti-DKK1 antibody: synthetic peptide directed towards the C terminal of human DKK1. Synthetic peptide located within the following region: CARHFWSKICKPVLKEGQVCTKHRRKGSHGLEIFQRCYCGEGLScriQKD
Formulation:	Liquid. Purified antibody supplied in 1x PBS buffer with 0.09% (w/v) sodium azide and 2% sucrose. <i>Note that this product is shipped as lyophilized powder to China customers.</i>
Purification:	Protein A purified
Conjugation:	Unconjugated
Storage:	Store at -20°C as received.
Stability:	Stable for 12 months from date of receipt.
Predicted Protein Size:	26 kDa
Gene Name:	dickkopf WNT signaling pathway inhibitor 1
Database Link:	NP_036374 Entrez Gene 22943 Human O94907
Background:	This gene encodes a protein that is a member of the dickkopf family. It is a secreted protein with two cysteine rich regions and is involved in embryonic development through its inhibition of the WNT signaling pathway. Elevated levels of DKK1 in bone marrow plasma and peripheral blood is associated with the presence of osteolytic bone lesions in patients with multiple myeloma. [provided by RefSeq, Jul 2008]
Synonyms:	DKK-1; SK



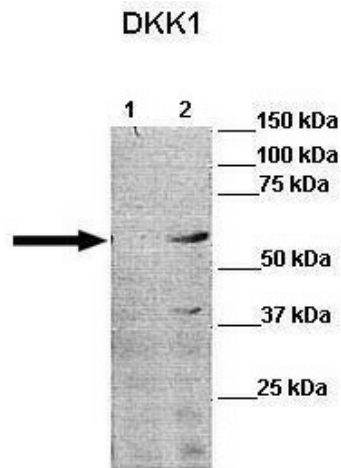
[View online »](#)

Note: Immunogen Sequence Homology: Dog: 100%; Pig: 100%; Rat: 100%; Goat: 100%; Horse: 100%; Human: 100%; Sheep: 100%; Bovine: 100%; Rabbit: 100%; Guinea pig: 100%; Mouse: 93%; Zebrafish: 86%

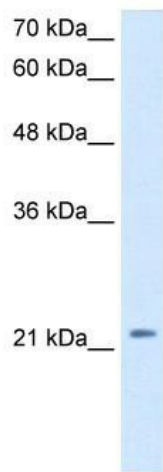
Protein Families: Adult stem cells, Cancer stem cells, Druggable Genome, ES Cell Differentiation/IPS, Secreted Protein, Stem cell relevant signaling - Wnt Signaling pathway

Protein Pathways: Wnt signaling pathway

Product images:



Lanes: Lane 1: 30ug human PLC/PRF5 cell lysate; Lane 2: 30ug DKK1 PLC/PRF5 cell lysate; Primary Antibody Dilution: 1: 1000; Secondary Antibody: Anti-rabbit-HRP Anti-rabbit-HRP; Secondary Antibody Dilution: 1: 10, 000; Gene Name: DKK1



WB Suggested Anti-DKK1 Antibody Titration: 2.5 ug/ml; Positive Control: HepG2 cell lysate