

Product datasheet for **TA346495**

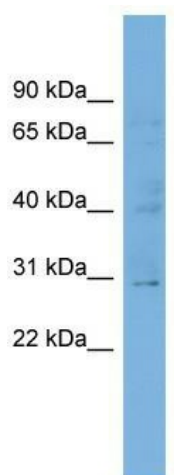
SPATA46 Rabbit Polyclonal Antibody

Product data:

Product Type:	Primary Antibodies
Applications:	WB
Recommended Dilution:	WB
Reactivity:	Human
Host:	Rabbit
Isotype:	IgG
Clonality:	Polyclonal
Immunogen:	The immunogen for anti-C1orf111 antibody: synthetic peptide directed towards the N terminal of human C1orf111. Synthetic peptide located within the following region: DIAKTAVPTEASSPAQALPPQYQSIIVRQGIQNTALSPDCSLGDTQHGEK
Formulation:	Liquid. Purified antibody supplied in 1x PBS buffer with 0.09% (w/v) sodium azide and 2% sucrose.
Purification:	Affinity Purified
Conjugation:	Unconjugated
Storage:	Store at -20°C as received.
Stability:	Stable for 12 months from date of receipt.
Predicted Protein Size:	29 kDa
Gene Name:	chromosome 1 open reading frame 111
Database Link:	NP_872387 Entrez Gene 284680 Human Q5T0L3
Background:	The function of this protein remains unknown.
Synonyms:	HSD20
Note:	Immunogen Sequence Homology: Human: 100%; Horse: 93%; Pig: 86%; Rabbit: 86%; Bovine: 79%



[View online »](#)

Product images:

WB Suggested Anti-C1orf111 Antibody Titration:
0.2-1 ug/ml; Positive Control: THP-1 cell lysate