

Product datasheet for **TA346494**

SPATA46 Rabbit Polyclonal Antibody

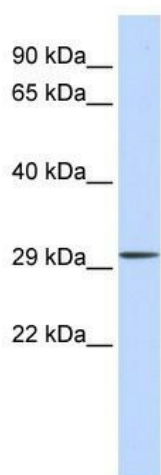
Product data:

Product Type:	Primary Antibodies
Applications:	WB
Recommended Dilution:	WB
Reactivity:	Human
Host:	Rabbit
Isotype:	IgG
Clonality:	Polyclonal
Immunogen:	The immunogen for anti-C1orf111 antibody: synthetic peptide directed towards the middle region of human C1orf111. Synthetic peptide located within the following region: CKVYYRKLKALWSKEQKARLGDRLSSGSCQAFNSPAEHLRQIGGEAYLCL
Formulation:	Liquid. Purified antibody supplied in 1x PBS buffer with 0.09% (w/v) sodium azide and 2% sucrose.
Purification:	Affinity Purified
Conjugation:	Unconjugated
Storage:	Store at -20°C as received.
Stability:	Stable for 12 months from date of receipt.
Predicted Protein Size:	29 kDa
Gene Name:	chromosome 1 open reading frame 111
Database Link:	NP_872387 Entrez Gene 284680 Human Q5T0L3
Background:	The function of the C1orf111 protein remains unknown.
Synonyms:	HSD20
Note:	Immunogen Sequence Homology: Dog: 100%; Human: 100%; Horse: 93%; Pig: 92%; Bovine: 92%; Rabbit: 92%; Guinea pig: 86%



[View online »](#)

Product images:



WB Suggested Anti-C1orf111 Antibody Titration:
0.2-1 ug/ml; ELISA Titer: 1: 312500; Positive
Control: Human brain