

Product datasheet for **TA346493**

C13ORF28 (SPACA7) Rabbit Polyclonal Antibody

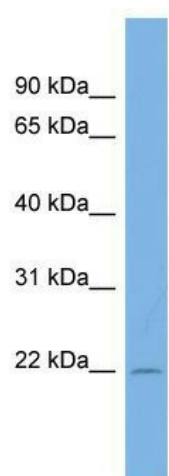
Product data:

Product Type:	Primary Antibodies
Applications:	WB
Recommended Dilution:	WB
Reactivity:	Human
Host:	Rabbit
Isotype:	IgG
Clonality:	Polyclonal
Immunogen:	The immunogen for anti-C13orf28 antibody: synthetic peptide directed towards the middle region of human C13orf28. Synthetic peptide located within the following region: PGIEDKISNDEANANANLHGDPSENYRGPQVSPGSEKSVSSKEKNSKNTQ
Formulation:	Liquid. Purified antibody supplied in 1x PBS buffer with 0.09% (w/v) sodium azide and 2% sucrose. <i>Note that this product is shipped as lyophilized powder to China customers.</i>
Purification:	Affinity Purified
Conjugation:	Unconjugated
Storage:	Store at -20°C as received.
Stability:	Stable for 12 months from date of receipt.
Predicted Protein Size:	21 kDa
Gene Name:	sperm acrosome associated 7
Database Link:	NP_660291 Entrez Gene 122258 Human Q96KW9
Background:	The function of this protein remains unknown.
Synonyms:	C13orf28
Note:	Immunogen Sequence Homology: Human: 100%
Protein Families:	Secreted Protein



[View online »](#)

Product images:



WB Suggested Anti-C13orf28 Antibody Titration:
0.2-1 ug/ml; ELISA Titer: 1: 62500; Positive
Control: COLO205 cell lysate