

## Product datasheet for **TA346489**

### NR2C2 Rabbit Polyclonal Antibody

#### Product data:

Product Type:	Primary Antibodies
Applications:	IHC, WB
Recommended Dilution:	WB, IHC
Reactivity:	Human
Host:	Rabbit
Isotype:	IgG
Clonality:	Polyclonal
Immunogen:	The immunogen for anti-NR2C2 antibody: synthetic peptide directed towards the C terminal of human NR2C2. Synthetic peptide located within the following region: AQCAQVMSLSTILAAIVNHLQNSIQEDKLSGDRIKQVMEHIWKLQEFCS
Formulation:	Liquid. Purified antibody supplied in 1x PBS buffer with 0.09% (w/v) sodium azide and 2% sucrose. <i>Note that this product is shipped as lyophilized powder to China customers.</i>
Purification:	Protein A purified
Conjugation:	Unconjugated
Storage:	Store at -20°C as received.
Stability:	Stable for 12 months from date of receipt.
Predicted Protein Size:	67 kDa
Gene Name:	nuclear receptor subfamily 2 group C member 2
Database Link:	<a href="#">NP_003289</a> <a href="#">Entrez Gene 7182 Human</a> <a href="#">P49116</a>



[View online »](#)

**Background:**

This gene encodes a protein that belongs to the nuclear hormone receptor family. Members of this family act as ligand-activated transcription factors and function in many biological processes such as development, cellular differentiation and homeostasis. The activated receptor/ligand complex is translocated to the nucleus where it binds to hormone response elements of target genes. The protein encoded by this gene plays a role in protecting cells from oxidative stress and damage induced by ionizing radiation. The lack of a similar gene in mouse results in growth retardation, severe spinal curvature, subfertility, premature aging, and prostatic intraepithelial neoplasia (PIN) development. Alternative splicing results in multiple transcript variants encoding different isoforms. [provided by RefSeq, Apr 2014]

**Synonyms:**

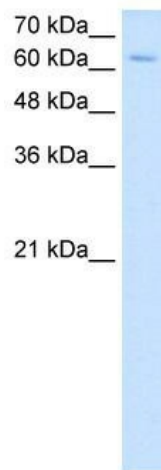
TAK1; TR4

**Note:**

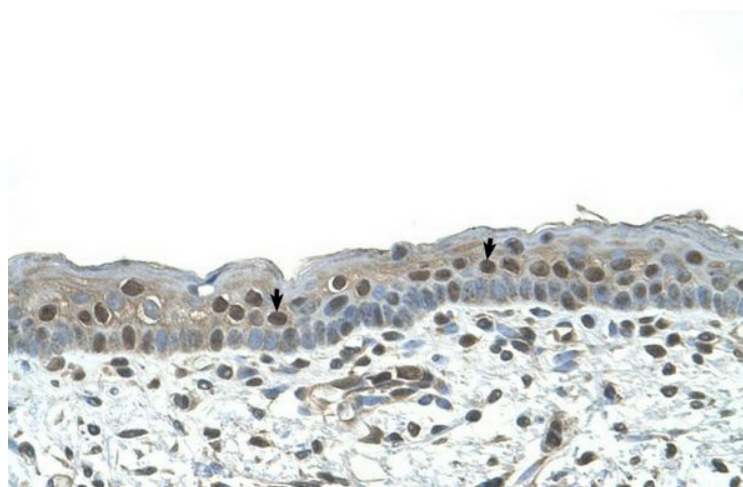
Immunogen Sequence Homology: Dog: 100%; Pig: 100%; Rat: 100%; Horse: 100%; Human: 100%; Mouse: 100%; Bovine: 100%; Rabbit: 100%; Guinea pig: 93%

**Protein Families:**

Druggable Genome, Nuclear Hormone Receptor, Transcription Factors

**Product images:**

NR2C2 antibody - C-terminal region validated by WB using HepG2 cell lysate at 2.5 ug/ml.



Human Skin