

Product datasheet for **TA346488**

COUP TF1 (NR2F1) Rabbit Polyclonal Antibody

Product data:

Product Type:	Primary Antibodies
Applications:	WB
Recommended Dilution:	WB
Reactivity:	Human
Host:	Rabbit
Isotype:	IgG
Clonality:	Polyclonal
Immunogen:	The immunogen for anti-NR2F1 antibody: synthetic peptide directed towards the C terminal of human NR2F1. Synthetic peptide located within the following region: VLFTSDACGLSDAAHIESLQEKSQCALEEYVRSQYPNQPSRFGKLLLRP
Formulation:	Liquid. Purified antibody supplied in 1x PBS buffer with 0.09% (w/v) sodium azide and 2% sucrose. <i>Note that this product is shipped as lyophilized powder to China customers.</i>
Purification:	Affinity Purified
Conjugation:	Unconjugated
Storage:	Store at -20°C as received.
Stability:	Stable for 12 months from date of receipt.
Predicted Protein Size:	46 kDa
Gene Name:	nuclear receptor subfamily 2 group F member 1
Database Link:	NP_005645 Entrez Gene 7025 Human P10589
Background:	The protein encoded by this gene is a nuclear hormone receptor and transcriptional regulator. The encoded protein acts as a homodimer and binds to 5'-AGGTCA-3' repeats. Defects in this gene are a cause of Bosch-Boonstra optic atrophy syndrome (BBOAS). [provided by RefSeq, Apr 2014]
Synonyms:	BBOAS; BBSOAS; COUP-TFI; EAR-3; EAR3; ERBAL3; NR2F2; SVP44; TCFCOUP1; TFCOUP1

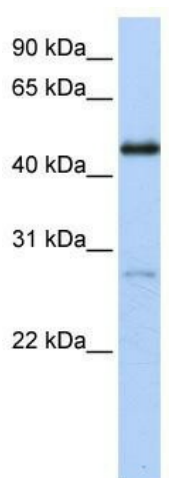


[View online »](#)

Note: Immunogen Sequence Homology: Pig: 100%; Rat: 100%; Horse: 100%; Human: 100%; Mouse: 100%; Bovine: 100%; Zebrafish: 100%; Guinea pig: 100%; Dog: 86%; Sheep: 86%; Rabbit: 86%

Protein Families: Druggable Genome, Nuclear Hormone Receptor, Transcription Factors

Product images:



WB Suggested Anti-NR2F1 Antibody Titration: 0.2-1 ug/ml; ELISA Titer: 1: 312500; Positive Control: Transfected 293T