

Product datasheet for TA346487

CTAGE5 (MIA2) Rabbit Polyclonal Antibody

Product data:

Product Type:	Primary Antibodies
Applications:	WB
Recommended Dilution:	WB, IHC
Reactivity:	Human
Host:	Rabbit
Isotype:	IgG
Clonality:	Polyclonal
Immunogen:	The immunogen for anti-CTAGE5 antibody: synthetic peptide directed towards the middle region of human CTAGE5. Synthetic peptide located within the following region: KLSKVDEKISHATEELETYRKRAKDLEEEELERTIHSYQGQIISHEKKAHD
Formulation:	Liquid. Purified antibody supplied in 1x PBS buffer with 0.09% (w/v) sodium azide and 2% sucrose. <i>Note that this product is shipped as lyophilized powder to China customers.</i>
Purification:	Affinity Purified
Conjugation:	Unconjugated
Storage:	Store at -20°C as received.
Stability:	Stable for 12 months from date of receipt.
Predicted Protein Size:	91 kDa
Gene Name:	CTAGE family member 5
Database Link:	NP_005921 Entrez Gene 4253 Human Q96PC5
Background:	The protein encoded by this gene is a tumor-associated antigen found in cutaneous T-cell lymphoma and several other cancers. Autoantibodies against the encoded protein have been found in some cancers. Several transcript variants encoding different isoforms have been found for this gene. [provided by RefSeq, Oct 2011]
Synonyms:	MEA6; MGEA; MGEA6; MGEA11

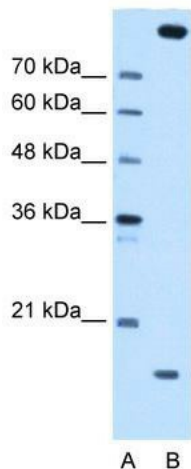


[View online »](#)

Note: Immunogen Sequence Homology: Dog: 100%; Horse: 100%; Human: 100%; Bovine: 100%; Pig: 93%; Rat: 93%; Mouse: 93%; Rabbit: 93%; Guinea pig: 87%

Protein Families: Transmembrane

Product images:



WB Suggested Anti-CTAGE5 Antibody Titration: 0.2-1 ug/ml; Positive Control: HepG2 cell lysate. CTAGE5 is strongly supported by BioGPS gene expression data to be expressed in Human HepG2 cells