

Product datasheet for **TA346485**

SDHB Rabbit Polyclonal Antibody

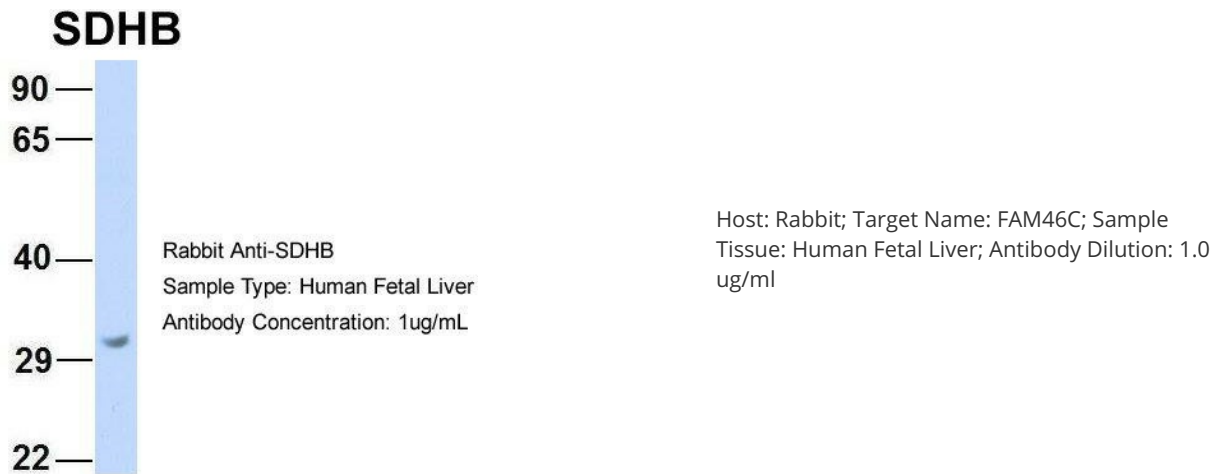
Product data:

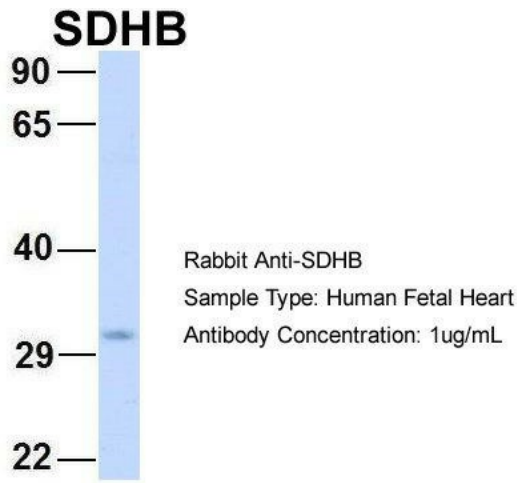
Product Type:	Primary Antibodies
Applications:	WB
Recommended Dilution:	WB
Reactivity:	Human
Host:	Rabbit
Isotype:	IgG
Clonality:	Polyclonal
Immunogen:	The immunogen for anti-SDHB antibody: synthetic peptide directed towards the middle region of human SDHB. Synthetic peptide located within the following region: YRWMIDSRDDFTEERLAKLQDPFSLYRCHTIMNCTRTPKGLNPGKAIAE
Formulation:	Liquid. Purified antibody supplied in 1x PBS buffer with 0.09% (w/v) sodium azide and 2% sucrose. <i>Note that this product is shipped as lyophilized powder to China customers.</i>
Purification:	Affinity Purified
Conjugation:	Unconjugated
Storage:	Store at -20°C as received.
Stability:	Stable for 12 months from date of receipt.
Predicted Protein Size:	31 kDa
Gene Name:	succinate dehydrogenase complex iron sulfur subunit B
Database Link:	NP_002991 Entrez Gene 6390 Human P21912



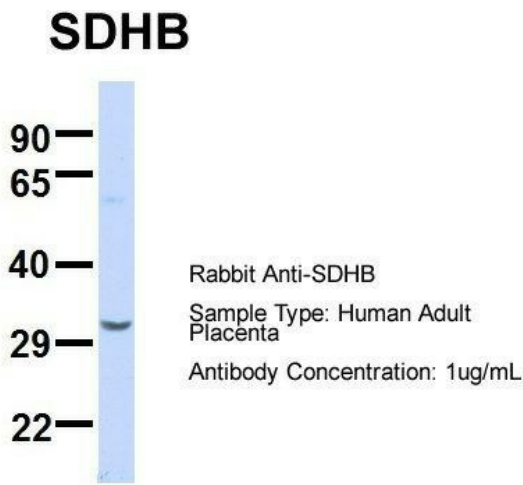
[View online »](#)

Background:	Complex II of the respiratory chain, which is specifically involved in the oxidation of succinate, carries electrons from FADH to CoQ. The complex is composed of four nuclear-encoded subunits and is localized in the mitochondrial inner membrane. The iron-sulfur subunit is highly conserved and contains three cysteine-rich clusters which may comprise the iron-sulfur centers of the enzyme. Sporadic and familial mutations in this gene result in paragangliomas and pheochromocytoma, and support a link between mitochondrial dysfunction and tumorigenesis. [provided by RefSeq, Jul 2008]
Synonyms:	CWS2; IP; PGL4; SDH; SDH1; SDH2; SDHIP
Note:	Immunogen Sequence Homology: Dog: 100%; Pig: 100%; Rat: 100%; Goat: 100%; Horse: 100%; Human: 100%; Mouse: 100%; Bovine: 100%; Rabbit: 100%; Guinea pig: 100%; Zebrafish: 86%; Yeast: 79%
Protein Families:	Druggable Genome
Protein Pathways:	Alzheimer's disease, Citrate cycle (TCA cycle), Huntington's disease, Metabolic pathways, Oxidative phosphorylation, Parkinson's disease

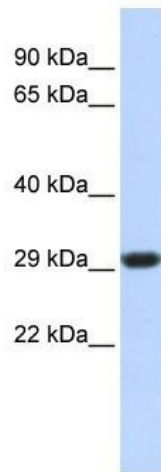
Product images:



Host: Rabbit; Target Name: GNAS; Sample Tissue: Human Fetal Heart; Antibody Dilution: 1.0 ug/ml



Host: Rabbit; Target Name: SERPINA3; Sample Tissue: Human Adult Placenta; Antibody Dilution: 1.0 ug/ml



WB Suggested Anti-SDHB Antibody Titration: 0.2-1 ug/ml; ELISA Titer: 1: 62500; Positive Control: Jurkat cell lysate. SDHB is supported by BioGPS gene expression data to be expressed in Jurkat