

Product datasheet for **TA346483**

Fetuin B (FETUB) Rabbit Polyclonal Antibody

Product data:

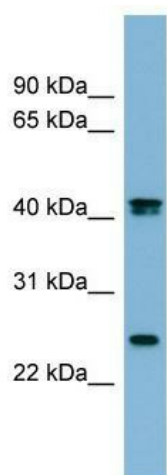
Product Type:	Primary Antibodies
Applications:	WB
Recommended Dilution:	WB
Reactivity:	Human
Host:	Rabbit
Isotype:	IgG
Clonality:	Polyclonal
Immunogen:	The immunogen for anti-FETUB antibody: synthetic peptide directed towards the N terminal of human FETUB. Synthetic peptide located within the following region: GCNDSVDLAVAGFALRDINKDRKDGYYLRLNRVNDAAQEYRRGGLGSLFYL
Formulation:	Liquid. Purified antibody supplied in 1x PBS buffer with 0.09% (w/v) sodium azide and 2% sucrose. <i>Note that this product is shipped as lyophilized powder to China customers.</i>
Purification:	Affinity Purified
Conjugation:	Unconjugated
Storage:	Store at -20°C as received.
Stability:	Stable for 12 months from date of receipt.
Predicted Protein Size:	42 kDa
Gene Name:	fetuin B
Database Link:	NP_055190 Entrez Gene 26998 Human Q9UGM5
Background:	The protein encoded by this gene is a member of the fetuin family, part of the cystatin superfamily of cysteine protease inhibitors. Fetuins have been implicated in several diverse functions, including osteogenesis and bone resorption, regulation of the i
Synonyms:	16G2; Gugu; IRL685
Note:	Immunogen Sequence Homology: Human: 100%



[View online »](#)

Protein Families: Secreted Protein

Product images:



WB Suggested Anti-FETUB Antibody Titration: 0.2-1 ug/ml; ELISA Titer: 1: 312500; Positive Control: Human Small Intestine