

## Product datasheet for **TA346481**

### CD299 (CLEC4M) Rabbit Polyclonal Antibody

#### Product data:

Product Type:	Primary Antibodies
Applications:	IHC, WB
Recommended Dilution:	WB, IHC
Reactivity:	Human
Host:	Rabbit
Isotype:	IgG
Clonality:	Polyclonal
Immunogen:	The immunogen for anti-CLEC4M antibody: synthetic peptide directed towards the N terminal of human CLEC4M. Synthetic peptide located within the following region: LVLQLLSFMLLAGVLVAILVQVSKVPSSLSQEQSEQDAIYQNLTKAAV
Formulation:	Liquid. Purified antibody supplied in 1x PBS buffer with 0.09% (w/v) sodium azide and 2% sucrose. <i>Note that this product is shipped as lyophilized powder to China customers.</i>
Purification:	Protein A Purified
Conjugation:	Unconjugated
Storage:	Store at -20°C as received.
Stability:	Stable for 12 months from date of receipt.
Predicted Protein Size:	44 kDa
Gene Name:	C-type lectin domain family 4 member M
Database Link:	<a href="#">NP_055072</a> <a href="#">Entrez Gene 10332 Human</a> <a href="#">Q9H2X3</a>



[View online »](#)

**Background:**

CLEC4M is a type II integral membrane protein that is 77% identical to CD209 antigen, a HIV gp120-binding protein. This protein, like CD209, efficiently binds both intercellular adhesion molecule 3 (ICAM3) and HIV-1 gp120, and enhances HIV-1 infection of T cells. Western blots using two different antibodies against two unique regions of this protein target confirm the same apparent molecular weight in our tests. This gene encodes a type II integral membrane protein that is 77% identical to CD209 antigen, a HIV gp120-binding protein. This protein, like CD209, efficiently binds both intercellular adhesion molecule 3 (ICAM3) and HIV-1 gp120, and enhances HIV-1 infection of T cells. This gene is mapped to 19p13.3, in a cluster with the CD209 and CD23/FCER2 genes. Multiple alternatively spliced transcript variants have been found for this gene, but the biological validity of some variants has not been determined.

**Synonyms:**

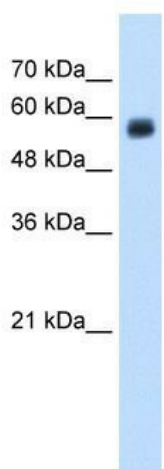
CD209L; CD299; DC-SIGN2; DC-SIGNR; DCSIGNR; HP10347; L-SIGN; LSIGN

**Note:**

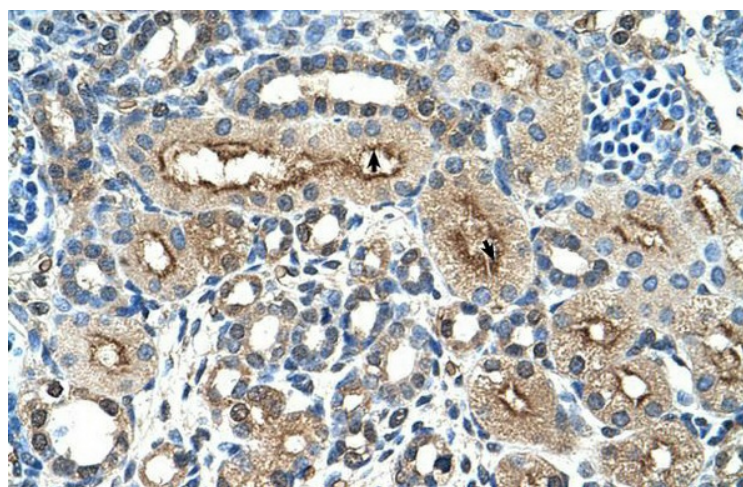
Immunogen Sequence Homology: Human: 100%; Pig: 86%

**Protein Families:**

Druggable Genome, Transmembrane

**Product images:**

WB Suggested Anti-CLEC4M Antibody Titration:  
1.25 ug/ml; Positive Control: HepG2 cell lysate



Human kidney