

Product datasheet for **TA346478**

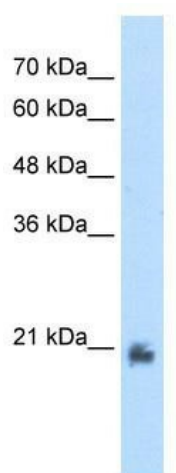
METTL7A Rabbit Polyclonal Antibody

Product data:

Product Type:	Primary Antibodies
Applications:	WB
Recommended Dilution:	WB
Reactivity:	Human
Host:	Rabbit
Isotype:	IgG
Clonality:	Polyclonal
Immunogen:	The immunogen for anti-METTL7A antibody: synthetic peptide directed towards the N terminal of human METTL7A. Synthetic peptide located within the following region: MASKKRELFNSNLQEFAGPSGKLSLLEVGCGTGANFKFYPPGCRVTCIDPN
Formulation:	Liquid. Purified antibody supplied in 1x PBS buffer with 0.09% (w/v) sodium azide and 2% sucrose. <i>Note that this product is shipped as lyophilized powder to China customers.</i>
Purification:	Protein A Purified
Conjugation:	Unconjugated
Storage:	Store at -20°C as received.
Stability:	Stable for 12 months from date of receipt.
Predicted Protein Size:	20 kDa
Gene Name:	methyltransferase like 7A
Database Link:	NP_054752 Entrez Gene 25840 Human Q9H8H3
Background:	The function remains unknown.
Synonyms:	AAM-B
Note:	Immunogen Sequence Homology: Rat: 100%; Human: 100%; Mouse: 100%; Rabbit: 93%; Horse: 86%; Bovine: 86%; Dog: 83%
Protein Families:	Druggable Genome, Transmembrane



[View online »](#)

Product images:

WB Suggested Anti-METTL7A Antibody Titration:
2.5 ug/ml; Positive Control: Transfected 293T