

## Product datasheet for **TA346477**

### **TMEM176B Rabbit Polyclonal Antibody**

#### **Product data:**

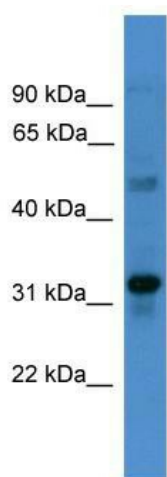
<b>Product Type:</b>	Primary Antibodies
<b>Applications:</b>	WB
<b>Recommended Dilution:</b>	WB
<b>Reactivity:</b>	Human
<b>Host:</b>	Rabbit
<b>Isotype:</b>	IgG
<b>Clonality:</b>	Polyclonal
<b>Immunogen:</b>	The immunogen for anti-TMEM176B antibody: synthetic peptide directed towards the C terminal of human TMEM176B. Synthetic peptide located within the following region: SLVSLGVGLRNLCGQSSQPLNEEGSEKRLGNSVPPSPSREQTSTAIL
<b>Formulation:</b>	Liquid. Purified antibody supplied in 1x PBS buffer with 0.09% (w/v) sodium azide and 2% sucrose. <i>Note that this product is shipped as lyophilized powder to China customers.</i>
<b>Purification:</b>	Affinity Purified
<b>Conjugation:</b>	Unconjugated
<b>Storage:</b>	Store at -20°C as received.
<b>Stability:</b>	Stable for 12 months from date of receipt.
<b>Predicted Protein Size:</b>	29 kDa
<b>Gene Name:</b>	transmembrane protein 176B
<b>Database Link:</b>	<a href="#">NP_054739</a> <a href="#">Entrez Gene 28959 Human</a> <a href="#">Q3YBM2</a>
<b>Background:</b>	TMEM176B may play a role in the process of maturation of dendritic cells. TMEM176B is required for the development of cerebellar granule cells.
<b>Synonyms:</b>	LR8; MS4B2
<b>Note:</b>	Immunogen Sequence Homology: Human: 100%; Dog: 85%; Pig: 85%; Horse: 85%; Bovine: 85%



[View online »](#)

Protein Families: Druggable Genome, Transmembrane

### Product images:



WB Suggested Anti-TMEM176B Antibody  
Titration: 0.2-1 ug/ml; ELISA Titer: 1: 312500;  
Positive Control: OVCAR-3 cell lysate