

Product datasheet for **TA346474**

CEMIP2 Rabbit Polyclonal Antibody

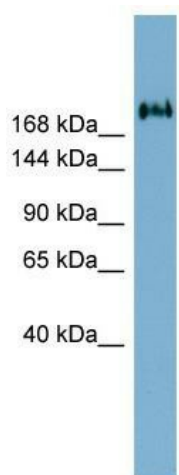
Product data:

Product Type:	Primary Antibodies
Applications:	WB
Recommended Dilution:	WB
Reactivity:	Human
Host:	Rabbit
Isotype:	IgG
Clonality:	Polyclonal
Immunogen:	The immunogen for anti-TMEM2 antibody: synthetic peptide directed towards the middle region of human TMEM2. Synthetic peptide located within the following region: MLTGLCQCGTRQVVFTSDPHKSYLPVQFQSPDKAETQRGDPSVISVNGT
Formulation:	Liquid. Purified antibody supplied in 1x PBS buffer with 0.09% (w/v) sodium azide and 2% sucrose. <i>Note that this product is shipped as lyophilized powder to China customers.</i>
Purification:	Affinity Purified
Conjugation:	Unconjugated
Storage:	Store at -20°C as received.
Stability:	Stable for 12 months from date of receipt.
Predicted Protein Size:	154 kDa
Gene Name:	transmembrane protein 2
Database Link:	NP_037522 Entrez Gene 23670 Human Q9UHN6
Background:	The function of this protein remains unknown.
Synonyms:	OTTHUMP00000021450; transmembrane protein 2
Note:	Immunogen Sequence Homology: Pig: 100%; Rat: 100%; Human: 100%; Rabbit: 100%; Dog: 93%; Horse: 93%; Mouse: 93%; Guinea pig: 93%; Bovine: 86%
Protein Families:	Transmembrane



[View online »](#)

Product images:



WB Suggested Anti-TMEM2 Antibody Titration:
0.2-1 ug/ml; ELISA Titer: 1: 312500; Positive
Control: PANC1 cell lysate