

## Product datasheet for **TA346473**

### Grem1 Rabbit Polyclonal Antibody

#### Product data:

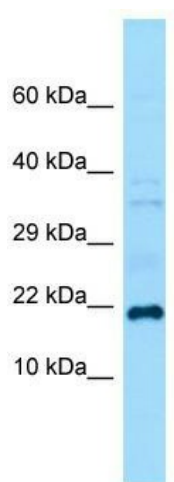
Product Type:	Primary Antibodies
Applications:	WB
Recommended Dilution:	WB
Reactivity:	Mouse
Host:	Rabbit
Isotype:	IgG
Clonality:	Polyclonal
Immunogen:	The immunogen for Anti-Grem1 antibody is: synthetic peptide directed towards the C-terminal region of Mouse Grem1. Synthetic peptide located within the following region: EEGSFQSCSFCKPKKFTTMMVTLNCPQLPPTKKRVTRVKQCRCISIDL
Formulation:	Liquid. Purified antibody supplied in 1x PBS buffer with 0.09% (w/v) sodium azide and 2% sucrose. <i>Note that this product is shipped as lyophilized powder to China customers.</i>
Purification:	Affinity Purified
Conjugation:	Unconjugated
Storage:	Store at -20°C as received.
Stability:	Stable for 12 months from date of receipt.
Predicted Protein Size:	21 kDa
Gene Name:	gremlin 1, DAN family BMP antagonist
Database Link:	<a href="#">NP_035954</a> <a href="#">Entrez Gene 23892 Mouse O70326</a>
Background:	Grem1 is a cytokine that may play an important role during carcinogenesis and metanephric kidney organogenesis, as BMP a antagonist required for early limb outgrowth and patterning in maintaining the FGF4-SHH feedback loop. It down-regulates the BMP4 signaling in a dose-dependent manner and acts as inhibitor of monocyte chemotaxis.



[View online »](#)

**Note:** Immunogen Sequence Homology: Dog: 100%; Pig: 100%; Rat: 100%; Goat: 100%; Human: 100%; Mouse: 100%; Bovine: 100%; Rabbit: 100%; Guinea pig: 100%; Horse: 93%; Zebrafish: 86%

### Product images:



Host: Rabbit; Target Name: Grem1; Sample Tissue: Mouse Testis lysates; Antibody Dilution: 1.0 ug/ml