

Product datasheet for **TA346472**

KIR3DS1 Rabbit Polyclonal Antibody

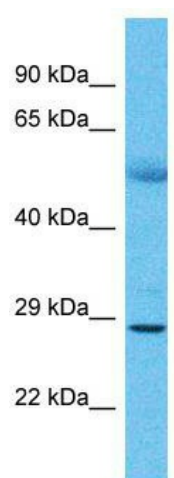
Product data:

Product Type:	Primary Antibodies
Applications:	WB
Recommended Dilution:	WB
Reactivity:	Human
Host:	Rabbit
Isotype:	IgG
Clonality:	Polyclonal
Immunogen:	The immunogen for Anti-KIR3DS1 antibody is: synthetic peptide directed towards the middle region of Human KIR3DS1. Synthetic peptide located within the following region: IMFEHFFLHKEWISKDPSRLVGQIHDGVSKANFSIGSMMRALAGTYRCYG
Formulation:	Liquid. Purified antibody supplied in 1x PBS buffer with 0.09% (w/v) sodium azide and 2% sucrose. <i>Note that this product is shipped as lyophilized powder to China customers.</i>
Purification:	Affinity Purified
Conjugation:	Unconjugated
Storage:	Store at -20°C as received.
Stability:	Stable for 12 months from date of receipt.
Predicted Protein Size:	30 kDa
Gene Name:	killer cell immunoglobulin like receptor, three Ig domains and short cytoplasmic tail 1
Database Link:	NP_001077008 Entrez Gene 3813 Human Q14943
Background:	The function of this protein remains unknown.
Synonyms:	CD158E2; KIR-123FM; KIR-G1; NKAT-10; NKAT10
Note:	Immunogen Sequence Homology: Human: 100%
Protein Families:	Transmembrane



[View online »](#)

Product images:



Host: Rabbit; Target Name: KIR3DS1; Sample
Tissue: Lung Tumor lysates; Antibody Dilution: 1.0
ug/ml