

Product datasheet for **TA346467**

GNLY Rabbit Polyclonal Antibody

Product data:

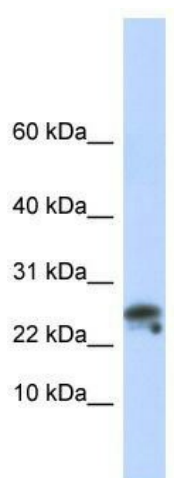
Product Type:	Primary Antibodies
Applications:	WB
Recommended Dilution:	WB
Reactivity:	Human
Host:	Rabbit
Isotype:	IgG
Clonality:	Polyclonal
Immunogen:	The immunogen for anti-GNLY antibody: synthetic peptide directed towards the n terminal of human GNLY. Synthetic peptide located within the following region: TRVCRTGRSRWRDVCRNFMRRYQSRVIQGLVAGETAQQICEDLRLCIPSTG
Formulation:	Liquid. Purified antibody supplied in 1x PBS buffer with 0.09% (w/v) sodium azide and 2% sucrose. <i>Note that this product is shipped as lyophilized powder to China customers.</i>
Purification:	Affinity Purified
Conjugation:	Unconjugated
Storage:	Store at -20°C as received.
Stability:	Stable for 12 months from date of receipt.
Predicted Protein Size:	11 kDa
Gene Name:	granulysin
Database Link:	NP_006424 Entrez Gene 10578 Human P22749
Background:	GNLY is a member of the saposin-like protein (SAPLIP) family and is located in the cytotoxic granules of T cells, which are released upon antigen stimulation. GNLY is present in cytotoxic granules of cytotoxic T lymphocytes and natural killer cells, and it has antimicrobial activity against <i>M. tuberculosis</i> and other organisms.
Synonyms:	D2S69E; LAG-2; LAG2; NKG5; TLA519
Note:	Immunogen Sequence Homology: Human: 100%



[View online »](#)

Protein Families: Secreted Protein

Product images:



WB Suggested Anti-GNLY Antibody Titration: 0.2-1 ug/ml; ELISA Titer: 1: 62500; Positive Control: Human Muscle