

Product datasheet for **TA346464**

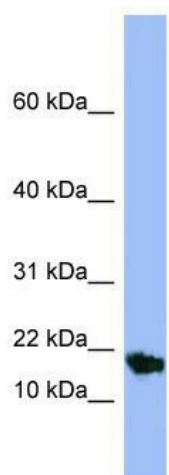
SMR3A Rabbit Polyclonal Antibody

Product data:

| | |
|-------------------------|---|
| Product Type: | Primary Antibodies |
| Applications: | WB |
| Recommended Dilution: | WB |
| Reactivity: | Human |
| Host: | Rabbit |
| Isotype: | IgG |
| Clonality: | Polyclonal |
| Immunogen: | The immunogen for anti-SMR3A antibody: synthetic peptide directed towards the middle region of human SMR3A. Synthetic peptide located within the following region: YGPGRIPSPPPPYGPGRIQSHSLPPPYGPGYPQPPSQPRPYPPGPPFFP |
| Formulation: | Liquid. Purified antibody supplied in 1x PBS buffer with 0.09% (w/v) sodium azide and 2% sucrose. <i>Note that this product is shipped as lyophilized powder to China customers.</i> |
| Purification: | Affinity Purified |
| Conjugation: | Unconjugated |
| Storage: | Store at -20°C as received. |
| Stability: | Stable for 12 months from date of receipt. |
| Predicted Protein Size: | 12 kDa |
| Gene Name: | submaxillary gland androgen regulated protein 3A |
| Database Link: | NP_036522 Entrez Gene 26952 Human Q99954 |
| Background: | SMR3A may play a role in protection or detoxification. |
| Synonyms: | P-B1; PBI; PRL5; PROL5 |
| Note: | Immunogen Sequence Homology: Human: 100%; Horse: 91%; Rat: 86%; Bovine: 75% |
| Protein Families: | Secreted Protein |



[View online »](#)

Product images:

WB Suggested Anti-SMR3A Antibody Titration:
0.2-1 ug/ml; ELISA Titer: 1: 312500; Positive
Control: Human Small Intestine