

Product datasheet for **TA346462**

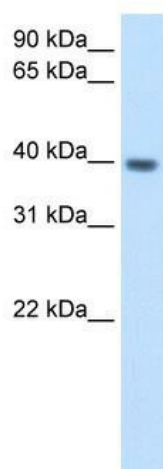
ITGB1BP2 Rabbit Polyclonal Antibody

Product data:

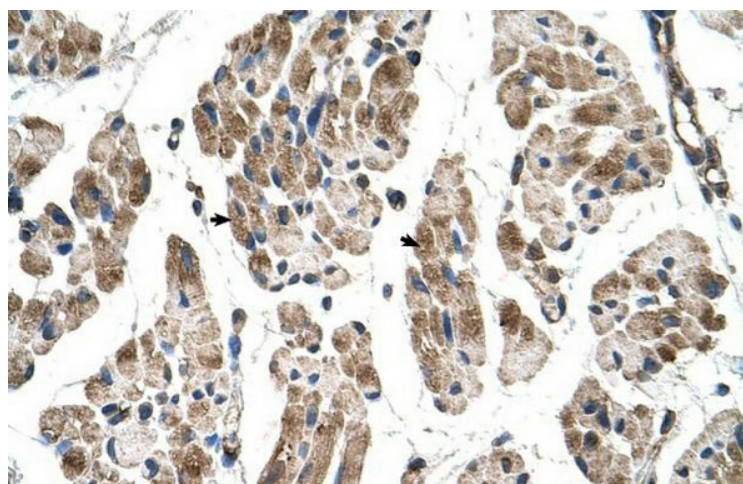
Product Type:	Primary Antibodies
Applications:	IHC, WB
Recommended Dilution:	WB, IHC
Reactivity:	Human
Host:	Rabbit
Isotype:	IgG
Clonality:	Polyclonal
Immunogen:	The immunogen for anti-ITGB1BP2 antibody: synthetic peptide directed towards the N terminal of human ITGB1BP2. Synthetic peptide located within the following region: MSLLCRNKGCGQHFDPNTNLPDSCCHHPGVPIFHDALKGWSCCRKRTVDF
Formulation:	Liquid. Purified antibody supplied in 1x PBS buffer with 0.09% (w/v) sodium azide and 2% sucrose. <i>Note that this product is shipped as lyophilized powder to China customers.</i>
Purification:	Protein A Purified
Conjugation:	Unconjugated
Storage:	Store at -20°C as received.
Stability:	Stable for 12 months from date of receipt.
Predicted Protein Size:	38 kDa
Gene Name:	integrin subunit beta 1 binding protein 2
Database Link:	NP_036410 Entrez Gene 26548 Human Q9UKP3
Background:	ITGB1BP2 may play a role during maturation and/or organization of muscles cells.
Synonyms:	CHORDC3; ITGB1BP; MELUSIN; MSTP015
Note:	Immunogen Sequence Homology: Rat: 100%; Human: 100%; Mouse: 100%; Rabbit: 100%; Dog: 93%; Pig: 93%; Horse: 93%; Bovine: 93%; Guinea pig: 86%



[View online »](#)

Product images:

WB Suggested Anti-ITGB1BP2 Antibody Titration: 2.5 ug/ml; Positive Control: Human heart



Rabbit Anti-ITGB1BP2 Antibody; Paraffin Embedded Tissue: Human Muscle; Cellular Data: Skeletal muscle cells; Antibody Concentration: 4.0-8.0 ug/ml; Magnification: 400X