

## Product datasheet for **TA346460**

### GPR161 Rabbit Polyclonal Antibody

#### Product data:

Product Type:	Primary Antibodies
Applications:	WB
Recommended Dilution:	WB
Reactivity:	Human
Host:	Rabbit
Isotype:	IgG
Clonality:	Polyclonal
Immunogen:	The immunogen for anti-GPR161 antibody: synthetic peptide directed towards the middle region of human GPR161. Synthetic peptide located within the following region: SISNRITDLGLSPHLTALMAGGQPLGHSSSTGDTGFSCSQDSGTMMLLE
Formulation:	Liquid. Purified antibody supplied in 1x PBS buffer with 0.09% (w/v) sodium azide and 2% sucrose. <i>Note that this product is shipped as lyophilized powder to China customers.</i>
Purification:	Affinity Purified
Conjugation:	Unconjugated
Storage:	Store at -20°C as received.
Stability:	Stable for 12 months from date of receipt.
Predicted Protein Size:	58 kDa
Gene Name:	G protein-coupled receptor 161
Database Link:	<a href="#">NP_722561</a> <a href="#">Entrez Gene 23432 Human</a> <a href="#">Q8N6U8</a>
Background:	Upon ligand binding, G protein-coupled receptors, such as GPR161, activate cytoplasmic G proteins (see GNAS, MIM 139320), allowing the receptors to transduce extracellular signals across the plasma membrane into the cell. Phosphorylation of the receptor attenuates signaling.
Synonyms:	RE2

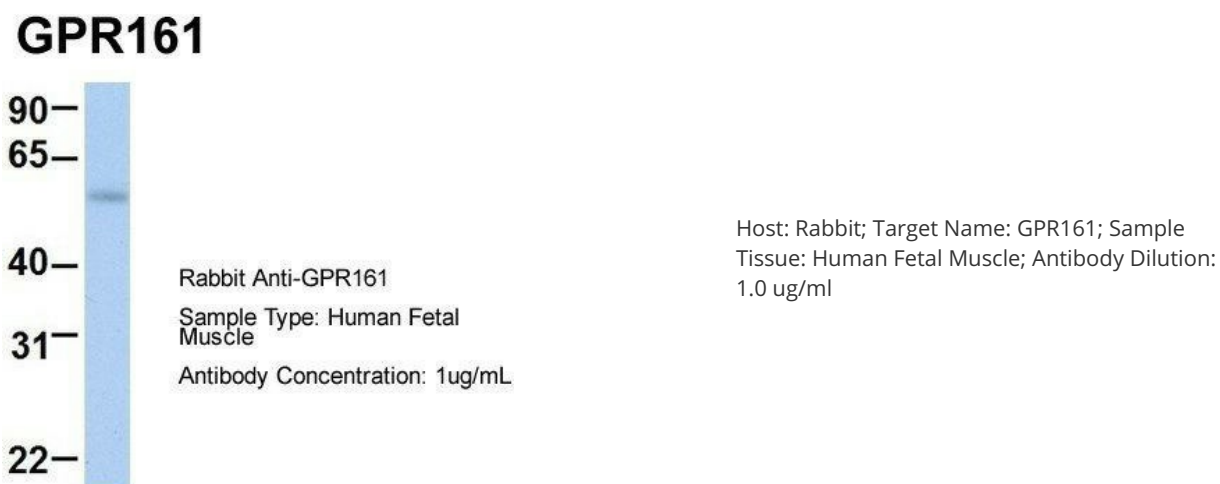
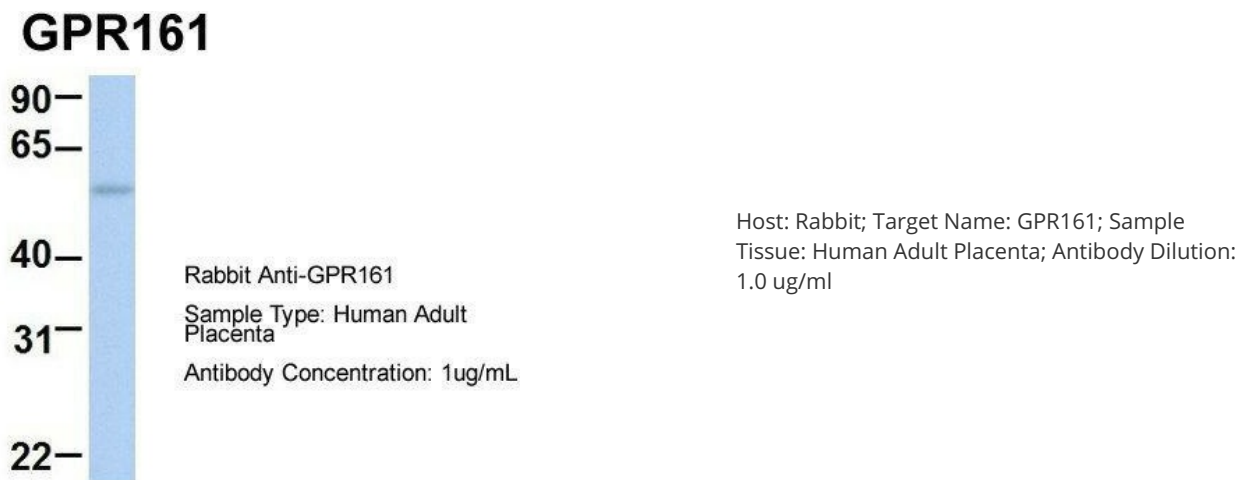


[View online »](#)

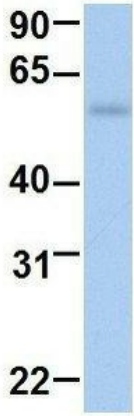
**Note:** Immunogen Sequence Homology: Pig: 100%; Human: 100%; Rabbit: 100%; Guinea pig: 100%; Dog: 93%; Rat: 93%; Horse: 93%; Mouse: 93%; Bovine: 86%

**Protein Families:** Druggable Genome, GPCR, Transmembrane

**Product images:**

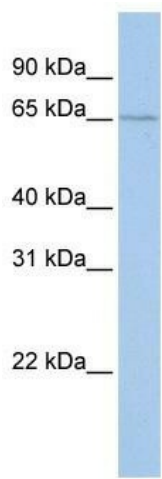


# GPR161



Rabbit Anti-GPR161  
Sample Type: Human Fetal Lung  
Antibody Concentration: 1ug/mL

Host: Rabbit; Target Name: GPR161; Sample  
Tissue: Human Fetal Lung; Antibody Dilution: 1.0  
ug/ml



WB Suggested Anti-GPR161 Antibody Titration:  
0.2-1 ug/ml; ELISA Titer: 1: 62500; Positive  
Control: 721\_B cell lysate; GPR161 is strongly  
supported by BioGPS gene expression data to be  
expressed in Human 721\_B cells