

Product datasheet for **TA346459**

GPR161 Rabbit Polyclonal Antibody

Product data:

Product Type:	Primary Antibodies
Applications:	IHC, WB
Recommended Dilution:	WB, IHC
Reactivity:	Human
Host:	Rabbit
Isotype:	IgG
Clonality:	Polyclonal
Immunogen:	The immunogen for anti-GPR161 antibody: synthetic peptide directed towards the middle region of human GPR161. Synthetic peptide located within the following region: FLVMLVCYGFIFRVARVKARKVHCGTVVIVEEDAQRTGRKNSSTSTSSSG
Formulation:	Liquid. Purified antibody supplied in 1x PBS buffer with 0.09% (w/v) sodium azide and 2% sucrose. <i>Note that this product is shipped as lyophilized powder to China customers.</i>
Purification:	Affinity Purified
Conjugation:	Unconjugated
Storage:	Store at -20°C as received.
Stability:	Stable for 12 months from date of receipt.
Predicted Protein Size:	45 kDa
Gene Name:	G protein-coupled receptor 161
Database Link:	NP_031395 Entrez Gene 23432 Human Q8N6U8
Background:	GPR161 is Orphan receptor.
Synonyms:	FLJ33952; G-protein coupled receptor; G protein-coupled receptor 161; OTTHUMP00000032585; OTTHUMP00000032586; OTTHUMP00000032587; RE2
Note:	Immunogen Sequence Homology: Human: 100%; Bovine: 100%; Dog: 93%; Pig: 93%; Rat: 93%; Horse: 93%; Rabbit: 93%; Guinea pig: 93%; Mouse: 86%



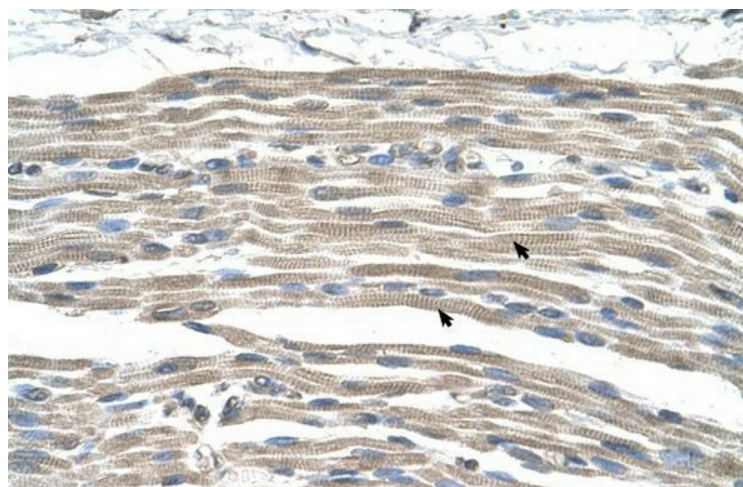
[View online »](#)

Protein Families: Druggable Genome, GPCR, Transmembrane

Product images:



WB Suggested Anti-GPR161 Antibody Titration: 0.2-1 ug/ml; Positive Control: Jurkat cell lysate



Rabbit Anti-GPR161 Antibody; Paraffin Embedded Tissue: Human Muscle; Cellular Data: Skeletal muscle cells; Antibody Concentration: 4.0-8.0 ug/ml; Magnification: 400X