

Product datasheet for **TA346458**

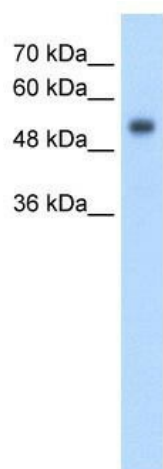
GPR161 Rabbit Polyclonal Antibody

Product data:

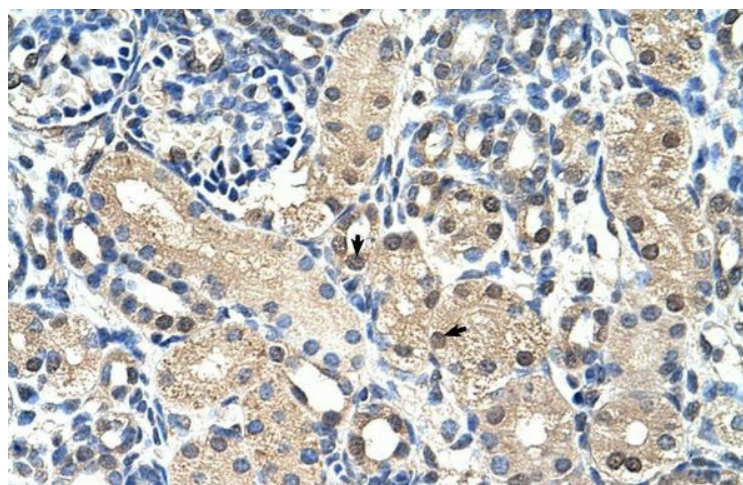
Product Type:	Primary Antibodies
Applications:	IHC, WB
Recommended Dilution:	WB, IHC
Reactivity:	Human
Host:	Rabbit
Isotype:	IgG
Clonality:	Polyclonal
Immunogen:	The immunogen for anti-GPR161 antibody: synthetic peptide directed towards the N terminal of human GPR161. Synthetic peptide located within the following region: MSLNSSLSCRKELSNLTEEEGGEGGVITQFIAIVITIFVCLGNLVIVV
Formulation:	Liquid. Purified antibody supplied in 1x PBS buffer with 0.09% (w/v) sodium azide and 2% sucrose. <i>Note that this product is shipped as lyophilized powder to China customers.</i>
Purification:	Affinity Purified
Conjugation:	Unconjugated
Storage:	Store at -20°C as received.
Stability:	Stable for 12 months from date of receipt.
Predicted Protein Size:	58 kDa
Gene Name:	G protein-coupled receptor 161
Database Link:	NP_722561 Entrez Gene 23432 Human Q8N6U8
Background:	GPR161 is orphan receptor.
Synonyms:	RE2
Note:	Immunogen Sequence Homology: Human: 100%; Dog: 93%; Horse: 93%; Rabbit: 93%; Pig: 86%; Rat: 86%; Mouse: 86%; Guinea pig: 79%
Protein Families:	Druggable Genome, GPCR, Transmembrane



[View online »](#)

Product images:

WB Suggested Anti-GPR161 Antibody Titration:
2.5 ug/ml; Positive Control: HepG2 cell lysate



Rabbit Anti-GPR161 Antibody; Paraffin Embedded
Tissue: Human Kidney; Cellular Data: Epithelial
cells of renal tubule; Antibody Concentration: 4.0-
8.0 ug/ml; Magnification: 400X