

## Product datasheet for **TA346455**

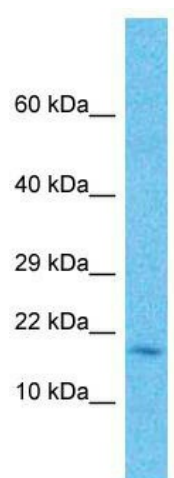
### FAM107A Rabbit Polyclonal Antibody

#### Product data:

Product Type:	Primary Antibodies
Applications:	WB
Recommended Dilution:	WB
Reactivity:	Human
Host:	Rabbit
Isotype:	IgG
Clonality:	Polyclonal
Immunogen:	The immunogen for Anti-FAM107A antibody is: synthetic peptide directed towards the N-terminal region of Human FAM107A. Synthetic peptide located within the following region: IQRERADIGGLMARPEYREWNPelikPKKLLNPVKASRSHQELHRELLMN
Formulation:	Liquid. Purified antibody supplied in 1x PBS buffer with 0.09% (w/v) sodium azide and 2% sucrose. <i>Note that this product is shipped as lyophilized powder to China customers.</i>
Purification:	Affinity Purified
Conjugation:	Unconjugated
Storage:	Store at -20°C as received.
Stability:	Stable for 12 months from date of receipt.
Predicted Protein Size:	17 kDa
Gene Name:	family with sequence similarity 107 member A
Database Link:	<a href="#">NP_009108</a> <a href="#">Entrez Gene 11170 Human O95990</a>
Background:	When FAM107A is transfected into cell lines in which it is not expressed, it suppresses cell growth. It may play a role in tumor development.
Synonyms:	DRR1; TU3A
Note:	Immunogen Sequence Homology: Dog: 100%; Pig: 100%; Rat: 100%; Horse: 100%; Human: 100%; Mouse: 100%; Rabbit: 100%; Zebrafish: 100%; Guinea pig: 100%; Bovine: 86%



[View online »](#)

**Product images:**

Host: Rabbit; Target Name: FAM107A; Sample  
Tissue: large intestine Tumor lysates; Antibody  
Dilution: 1.0 ug/ml