

Product datasheet for **TA346452**

SARDH Rabbit Polyclonal Antibody

Product data:

Product Type:	Primary Antibodies
Applications:	IHC, WB
Recommended Dilution:	WB, IHC
Reactivity:	Human
Host:	Rabbit
Isotype:	IgG
Clonality:	Polyclonal
Immunogen:	The immunogen for anti-SARDH antibody: synthetic peptide directed towards the middle region of human SARDH. Synthetic peptide located within the following region: DHPRWIRERSHESYAKNYSVVFPHDEPLAGRNMRDPLHEELLGQGCVFQ
Formulation:	Liquid. Purified antibody supplied in 1x PBS buffer with 0.09% (w/v) sodium azide and 2% sucrose. <i>Note that this product is shipped as lyophilized powder to China customers.</i>
Purification:	Protein A Purified
Conjugation:	Unconjugated
Storage:	Store at -20°C as received.
Stability:	Stable for 12 months from date of receipt.
Predicted Protein Size:	67 kDa
Gene Name:	sarcosine dehydrogenase
Database Link:	NP_001128179 Entrez Gene 1757 Human Q9UL12
Background:	The function remains known.
Synonyms:	BPR-2; DMGDHL1; SAR; SARD; SDH
Note:	Immunogen Sequence Homology: Dog: 100%; Rat: 100%; Horse: 100%; Human: 100%; Mouse: 100%; Zebrafish: 100%; Pig: 93%; Bovine: 93%; Guinea pig: 93%
Protein Pathways:	Glycine, serine and threonine metabolism, Metabolic pathways



[View online »](#)

Product images:

Rabbit Anti-SARDH Antibody

Catalog Number: ARP42344

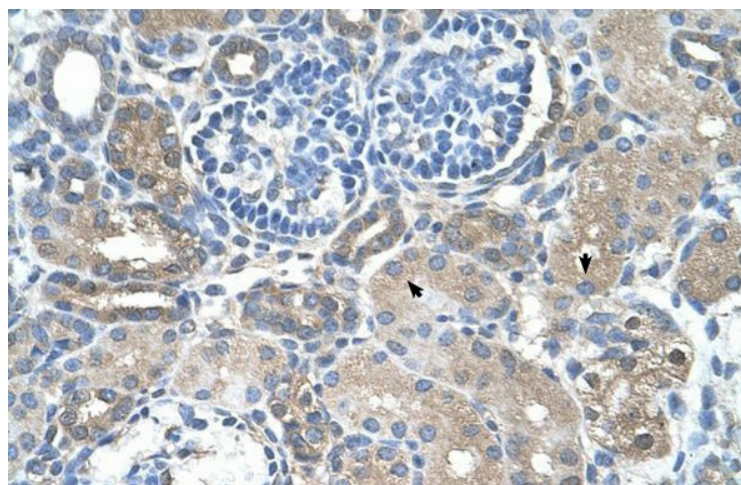
Lot Number: QC13309

Lane: HepG2 Cell Lysate

Antibody Titration: 2.5 μ g/ml

Gel Concentration: 12%

WB Suggested Anti-SARDH Antibody Titration: 2.5 ug/ml; Positive Control: HepG2 cell lysate; SARDH is supported by BioGPS gene expression data to be expressed in HepG2



Rabbit Anti-SARDH Antibody; Paraffin Embedded Tissue: Human Kidney; Cellular Data: Epithelial cells of renal tubule; Antibody Concentration: 4.0-8.0 ug/ml; Magnification: 400X