

Product datasheet for **TA346451**

Acid Phosphatase (ACP1) Rabbit Polyclonal Antibody

Product data:

Product Type:	Primary Antibodies
Applications:	WB
Recommended Dilution:	WB
Reactivity:	Human
Host:	Rabbit
Isotype:	IgG
Clonality:	Polyclonal
Immunogen:	The immunogen for anti-ACP1 antibody: synthetic peptide directed towards the middle region of human ACP1. Synthetic peptide located within the following region: NISENWVIDSGAVSDWNVGRSPDPRAVSCLRNHGIHTAHKARQITKEDFA
Formulation:	Liquid. Purified antibody supplied in 1x PBS buffer with 0.09% (w/v) sodium azide and 2% sucrose. <i>Note that this product is shipped as lyophilized powder to China customers.</i>
Purification:	Affinity Purified
Conjugation:	Unconjugated
Storage:	Store at -20°C as received.
Stability:	Stable for 12 months from date of receipt.
Predicted Protein Size:	18
Gene Name:	acid phosphatase 1, soluble
Database Link:	NP_009030 Entrez Gene 52 Human P24666
Background:	ACP1 belongs to the phosphotyrosine protein phosphatase family of proteins. It functions as an acid phosphatase and a protein tyrosine phosphatase by hydrolyzing protein tyrosine phosphate to protein tyrosine and orthophosphate. This enzyme also hydrolyzes orthophosphoric monoesters to alcohol and orthophosphate.
Synonyms:	HAAP



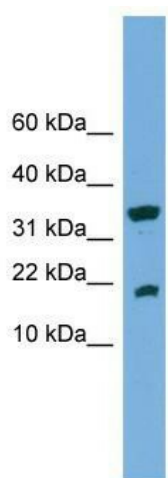
[View online »](#)

Note: Immunogen Sequence Homology: Human: 100%; Pig: 93%; Mouse: 93%; Dog: 86%; Rat: 86%; Goat: 86%; Bovine: 86%; Guinea pig: 86%

Protein Families: Druggable Genome, Phosphatase, Transmembrane

Protein Pathways: Adherens junction, Riboflavin metabolism

Product images:



WB Suggested Anti-ACP1 Antibody Titration: 0.2-1 ug/ml; ELISA Titer: 1: 312500; Positive Control: COLO205 cell lysate; ACP1 is strongly supported by BioGPS gene expression data to be expressed in Human COLO205 cells