

Product datasheet for **TA346450**

CD160 Rabbit Polyclonal Antibody

Product data:

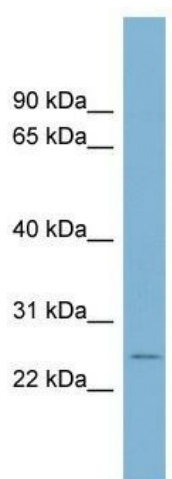
Product Type:	Primary Antibodies
Applications:	WB
Recommended Dilution:	WB
Reactivity:	Human
Host:	Rabbit
Isotype:	IgG
Clonality:	Polyclonal
Immunogen:	The immunogen for anti-CD160 antibody: synthetic peptide directed towards the middle region of human CD160. Synthetic peptide located within the following region: SGTYQCCARSQKSGIRLQGHFFSILFTETGNYTVTGLKQRQHLEFSHNEG
Formulation:	Liquid. Purified antibody supplied in 1x PBS buffer with 0.09% (w/v) sodium azide and 2% sucrose. <i>Note that this product is shipped as lyophilized powder to China customers.</i>
Purification:	Affinity Purified
Conjugation:	Unconjugated
Storage:	Store at -20°C as received.
Stability:	Stable for 12 months from date of receipt.
Predicted Protein Size:	20 kDa
Gene Name:	CD160 molecule
Database Link:	NP_008984 Entrez Gene 11126 Human O95971
Background:	CD160 is an 27 kDa glycoprotein which was initially identified with the monoclonal antibody BY55. Its expression is tightly associated with peripheral blood NK cells and CD8 T lymphocytes with cytolytic effector activity. The cDNA sequence of CD160 predic
Synonyms:	BY55; NK1; NK28
Note:	Immunogen Sequence Homology: Human: 100%



[View online »](#)

Protein Families: Druggable Genome

Product images:



WB Suggested Anti-CD160 Antibody Titration: 0.2-1 ug/ml; Positive Control: THP-1 cell lysate