

## Product datasheet for **TA346449**

### **PAGE4 Rabbit Polyclonal Antibody**

#### **Product data:**

Product Type:	Primary Antibodies
Applications:	WB
Recommended Dilution:	WB
Reactivity:	Human
Host:	Rabbit
Isotype:	IgG
Clonality:	Polyclonal
Immunogen:	The immunogen for anti-PAGE4 antibody: synthetic peptide directed towards the middle region of human PAGE4. Synthetic peptide located within the following region: PPIEERKVEGDCQEMDLEKTRSERGSDVKEKTPPNPKHAKTKEAGDGQ
Formulation:	Liquid. Purified antibody supplied in 1x PBS buffer with 0.09% (w/v) sodium azide and 2% sucrose. <i>Note that this product is shipped as lyophilized powder to China customers.</i>
Purification:	Affinity Purified
Conjugation:	Unconjugated
Storage:	Store at -20°C as received.
Stability:	Stable for 12 months from date of receipt.
Predicted Protein Size:	11
Gene Name:	PAGE family member 4
Database Link:	<a href="#">NP_008934</a> <a href="#">Entrez Gene 9506 Human</a> <a href="#">O60829</a>
Background:	This gene is a member of the GAGE family. The GAGE genes are expressed in a variety of tumors and in some fetal and reproductive tissues. This gene is strongly expressed in prostate and prostate cancer, but is also expressed in other male and female reproductive tissues including testis, fallopian tube, uterus, and placenta, as well as in testicular cancer and uterine cancer. The protein encoded by this gene shares sequence similarity with other GAGE/PAGE proteins, and also belongs to a family of CT (cancer-testis) antigens.

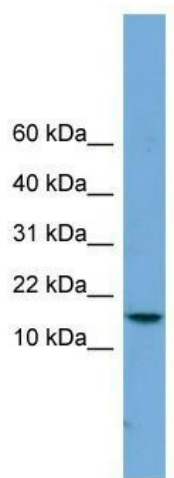


[View online »](#)

**Synonyms:** CT16.7; GAGE-9; GAGEC1; JM-27; JM27; PAGE-1; PAGE-4

**Note:** Immunogen Sequence Homology: Human: 100%

**Product images:**



WB Suggested Anti-PAGE4 Antibody Titration: 0.2-1 ug/ml; Positive Control: Jurkat cell lysate