

Product datasheet for **TA346444**

Slc6a9 Rabbit Polyclonal Antibody

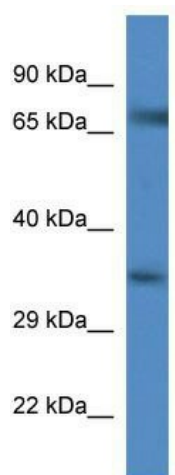
Product data:

| | |
|-------------------------|--|
| Product Type: | Primary Antibodies |
| Applications: | WB |
| Recommended Dilution: | WB |
| Reactivity: | Mouse |
| Host: | Rabbit |
| Isotype: | IgG |
| Clonality: | Polyclonal |
| Immunogen: | The immunogen for anti-Slc6a9 antibody: synthetic peptide corresponding to a region of Mouse. Synthetic peptide located within the following region: FQLCRTDGD TLLQRLKNATKPSRDWGPALLEHRTGRYAPTTTSPEDGFE |
| Formulation: | Liquid. Purified antibody supplied in 1x PBS buffer with 0.09% (w/v) sodium azide and 2% sucrose. <i>Note that this product is shipped as lyophilized powder to China customers.</i> |
| Purification: | Affinity Purified |
| Conjugation: | Unconjugated |
| Storage: | Store at -20°C as received. |
| Stability: | Stable for 12 months from date of receipt. |
| Predicted Protein Size: | 70 kDa |
| Gene Name: | solute carrier family 6 (neurotransmitter transporter, glycine), member 9 |
| Database Link: | NP_032161 Entrez Gene 14664 Mouse P28571 |
| Background: | Slc6a9 terminates the action of glycine by its high affinity sodium-dependent reuptake into presynaptic terminals. It may play a role in regulation of glycine levels in NMDA receptor-mediated neurotransmission. |
| Synonyms: | DKFZp547A1118; GlyT-1; GLYT1 |
| Note: | Immunogen Sequence Homology: Dog: 100%; Pig: 100%; Rat: 100%; Horse: 100%; Human: 100%; Mouse: 100%; Bovine: 100%; Guinea pig: 100%; Rabbit: 93% |



[View online »](#)

Product images:



WB Suggested Anti-Slc6a9 Antibody; Titration: 1.0 ug/ml; Positive Control: Mouse Spleen