

Product datasheet for **TA346442**

Pregnancy Specific Glycoprotein 1 (PSG1) Rabbit Polyclonal Antibody

Product data:

Product Type:	Primary Antibodies
Applications:	IHC, WB
Recommended Dilution:	WB, IHC
Reactivity:	Human
Host:	Rabbit
Isotype:	IgG
Clonality:	Polyclonal
Immunogen:	The immunogen for anti-PSG1 antibody: synthetic peptide directed towards the N terminal of human PSG1. Synthetic peptide located within the following region: SGRETAYSNASLLIQNVTREDAGSYTLHIIKGGDGTGRGVTGRFTFLHLE
Formulation:	Liquid. Purified antibody supplied in 1x PBS buffer with 0.09% (w/v) sodium azide and 2% sucrose. <i>Note that this product is shipped as lyophilized powder to China customers.</i>
Purification:	Protein A Purified
Conjugation:	Unconjugated
Storage:	Store at -20°C as received.
Stability:	Stable for 12 months from date of receipt.
Predicted Protein Size:	47 kDa
Gene Name:	pregnancy specific beta-1-glycoprotein 1
Database Link:	NP_008836 Entrez Gene 5669 Human P11464
Background:	The function remains unknown.
Synonyms:	2; B1G1; CD66f; D; DHFRP2; FL-NCA-1; PBG1; PS-beta-C; PS-beta-G-1; PSBG-1; PSBG1; PSG95; PSGGA
Note:	Immunogen Sequence Homology: Human: 100%
Protein Families:	Secreted Protein

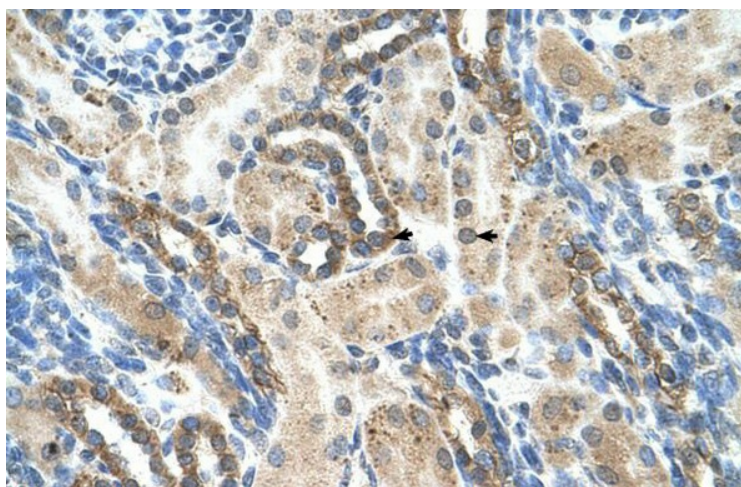


[View online »](#)

Product images:



WB Suggested Anti-PSG1 Antibody Titration: 2.5 ug/ml; Positive Control: Jurkat cell lysate



Rabbit Anti-PSG1 Antibody; Paraffin Embedded Tissue: Human Kidney; Cellular Data: Epithelial cells of renal tubule; Antibody Concentration: 4.0-8.0 ug/ml; Magnification: 400X