

## Product datasheet for **TA346441**

### SLC38A3 Rabbit Polyclonal Antibody

#### Product data:

Product Type:	Primary Antibodies
Applications:	IHC, WB
Recommended Dilution:	IHC, WB
Reactivity:	Human, Mouse
Host:	Rabbit
Isotype:	IgG
Clonality:	Polyclonal
Immunogen:	The immunogen for anti-SLC38A3 antibody: synthetic peptide directed towards the N terminal of human SLC38A3. Synthetic peptide located within the following region: GNQRVEDPARSCMEGKSFLQKSPSKEPHFTDFEGKTSFGMSVFNLSNAIM
Formulation:	Liquid. Purified antibody supplied in 1x PBS buffer with 0.09% (w/v) sodium azide and 2% sucrose. <i>Note that this product is shipped as lyophilized powder to China customers.</i>
Purification:	Affinity Purified
Conjugation:	Unconjugated
Storage:	Store at -20°C as received.
Stability:	Stable for 12 months from date of receipt.
Predicted Protein Size:	56 kDa
Gene Name:	solute carrier family 38 member 3
Database Link:	<a href="#">NP_006832</a> <a href="#">Entrez Gene 76257 Mouse</a> <a href="#">Entrez Gene 10991 Human</a> <a href="#">Q99624</a>
Background:	As a sodium-dependent amino acid/proton antiporter, SLC38A3 mediates electrogenic cotransport of glutamine and sodium ions in exchange for protons. It also recognizes histidine, asparagine and alanine. It may mediate amino acid transport in either direction under physiological conditions and may play a role in nitrogen metabolism and synaptic transmission.
Synonyms:	G17; NAT1; SN1; SNAT3

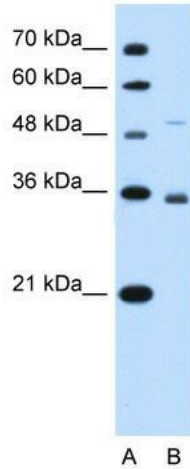


[View online »](#)

**Note:** Immunogen Sequence Homology: Pig: 100%; Rat: 100%; Horse: 100%; Human: 100%; Mouse: 100%; Bovine: 100%; Rabbit: 100%; Dog: 93%; Sheep: 86%; Guinea pig: 86%

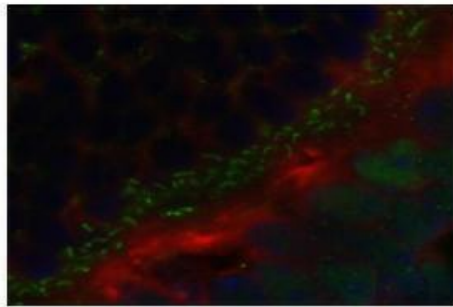
**Protein Families:** Transmembrane

**Product images:**



**SLC38A3**

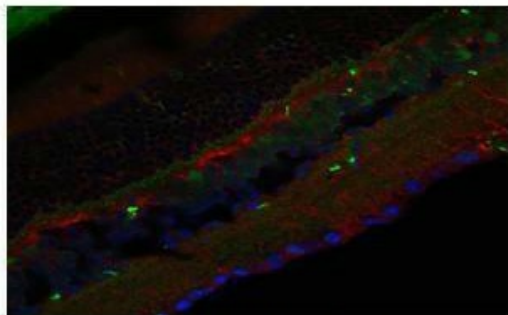
WB Suggested Anti-SLC38A3 Antibody Titration: 0.2-1 ug/ml; Positive Control: HepG2 cell lysate; SLC38A3 is supported by BioGPS gene expression data to be expressed in HepG2



**Red: SLC38A3 antibody  
Green: CtBP antibody  
Blue: DAPI**

Primary Antibody Dilution: 1: 200; Secondary Antibody: Goat anti-rabbit Alexafluor 568; Secondary Antibody dilution: 1: 200; Color/Signal Descriptions: SLC38A3: Red CtBP: Green DAPI: Blue; Gene Name: SLC38A3; Submitted by: Anonymous

## SLC38A3



Red: SLC38A3 antibody  
Green: CtBP antibody  
Blue: DAPI

Primary Antibody Dilution: 1: 200; Secondary Antibody: Goat anti-rabbit Alexafluor 568; Secondary Antibody dilution: 1: 200; Color/Signal Descriptions: SLC38A3: Red CtBP: Green DAPI: Blue; Gene Name: SLC38A3; Submitted by: Anonymous