

Product datasheet for **TA346439**

SLC20A2 Rabbit Polyclonal Antibody

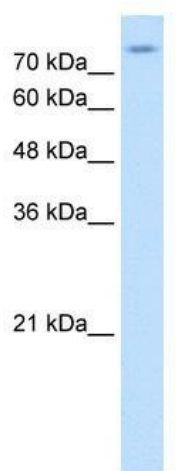
Product data:

Product Type:	Primary Antibodies
Applications:	WB
Recommended Dilution:	WB
Reactivity:	Human
Host:	Rabbit
Isotype:	IgG
Clonality:	Polyclonal
Immunogen:	The immunogen for anti-SLC20A2 antibody: synthetic peptide directed towards the N terminal of human SLC20A2. Synthetic peptide located within the following region: DVNLYNETVETLMAGEVSAMVGSAAVWQLIASFLRLPISGTHCIVGSTIGF
Formulation:	Liquid. Purified antibody supplied in 1x PBS buffer with 0.09% (w/v) sodium azide and 2% sucrose. <i>Note that this product is shipped as lyophilized powder to China customers.</i>
Purification:	Affinity Purified
Conjugation:	Unconjugated
Storage:	Store at -20°C as received.
Stability:	Stable for 12 months from date of receipt.
Predicted Protein Size:	70 kDa
Gene Name:	solute carrier family 20 member 2
Database Link:	NP_006740 Entrez Gene 6575 Human Q08357
Background:	The function remains unknown.
Synonyms:	GLVR-2; GLVR2; IBGC1; IBGC3; MLVAR; PIT-2; PIT2; Ram-1; RAM1
Note:	Immunogen Sequence Homology: Dog: 100%; Pig: 100%; Rat: 100%; Horse: 100%; Human: 100%; Mouse: 100%; Bovine: 100%; Rabbit: 100%; Guinea pig: 100%; Zebrafish: 93%
Protein Families:	Druggable Genome, Transmembrane



[View online »](#)

Product images:



WB Suggested Anti-SLC20A2 Antibody Titration:
0.2-1 ug/ml; Positive Control: HepG2 cell lysate