

## Product datasheet for **TA346438**

### Slap (SLA) Rabbit Polyclonal Antibody

#### Product data:

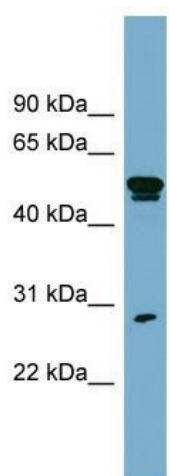
Product Type:	Primary Antibodies
Applications:	WB
Recommended Dilution:	IHC, WB
Reactivity:	Human
Host:	Rabbit
Isotype:	IgG
Clonality:	Polyclonal
Immunogen:	The immunogen for anti-SLA antibody: synthetic peptide directed towards the middle region of human SLA. Synthetic peptide located within the following region: PEGTENPLGVDESLFSYGLRESIASYLSLTSEDNTSFDRKKKSISLMYGG
Formulation:	Liquid. Purified antibody supplied in 1x PBS buffer with 0.09% (w/v) sodium azide and 2% sucrose. <i>Note that this product is shipped as lyophilized powder to China customers.</i>
Purification:	Affinity Purified
Conjugation:	Unconjugated
Storage:	Store at -20°C as received.
Stability:	Stable for 12 months from date of receipt.
Predicted Protein Size:	31 kDa
Gene Name:	Src-like-adaptor
Database Link:	<a href="#">NP_006739</a> <a href="#">Entrez Gene 6503 Human</a> <a href="#">Q13239</a>
Background:	SLA is an adapter protein, which negatively regulates T-cell receptor (TCR) signaling. SLA inhibits T-cell antigen-receptor induced activation of nuclear factor of activated T-cells. SLA is involved in the negative regulation of positive selection and mit
Synonyms:	SLA1; SLAP
Note:	Immunogen Sequence Homology: Dog: 100%; Pig: 100%; Rat: 100%; Horse: 100%; Human: 100%; Mouse: 100%; Bovine: 100%; Rabbit: 100%; Guinea pig: 100%



[View online »](#)

Protein Families: Druggable Genome

### Product images:



WB Suggested Anti-SLA Antibody Titration: 0.2-1 ug/ml; Positive Control: OVCAR-3 cell lysate