

## Product datasheet for **TA346435**

### SLC22A7 Rabbit Polyclonal Antibody

#### Product data:

Product Type:	Primary Antibodies
Applications:	IHC, WB
Recommended Dilution:	WB, IHC
Reactivity:	Human
Host:	Rabbit
Isotype:	IgG
Clonality:	Polyclonal
Immunogen:	The immunogen for anti-SLC22A7 antibody: synthetic peptide directed towards the N terminal of human SLC22A7. Synthetic peptide located within the following region: LPGAPANFSHQDVWLEAHLPREPDGTLSSCLRFAYPQALPNTTLGEERQS
Formulation:	Liquid. Purified antibody supplied in 1x PBS buffer with 0.09% (w/v) sodium azide and 2% sucrose. <i>Note that this product is shipped as lyophilized powder to China customers.</i>
Purification:	Protein A Purified
Conjugation:	Unconjugated
Storage:	Store at -20°C as received.
Stability:	Stable for 12 months from date of receipt.
Predicted Protein Size:	60 kDa
Gene Name:	solute carrier family 22 member 7
Database Link:	<a href="#">NP_006663</a> <a href="#">Entrez Gene 10864 Human</a> <a href="#">Q9Y694</a>



[View online »](#)

**Background:**

SLC22A7 is involved in the sodium-independent transport and excretion of organic anions, some of which are potentially toxic. The protein is an integral membrane protein and appears to be localized to the basolateral membrane of the kidney. The protein encoded by this gene is involved in the sodium-independent transport and excretion of organic anions, some of which are potentially toxic. The encoded protein is an integral membrane protein and appears to be localized to the basolateral membrane of the kidney. Alternatively spliced transcript variants encoding different isoforms have been described.

**Synonyms:**

NLT; OAT2

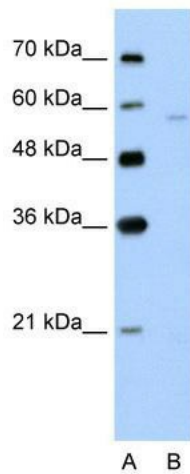
**Note:**

Immunogen Sequence Homology: Horse: 100%; Human: 100%; Pig: 93%; Guinea pig: 93%; Bovine: 92%; Rat: 86%; Rabbit: 79%

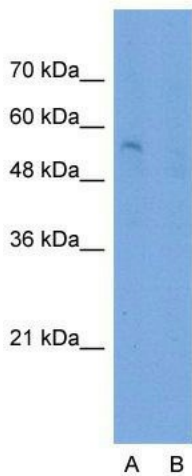
**Protein Families:**

Druggable Genome, Transmembrane

**Product images:**



WB Suggested Anti-SLC22A7 Antibody Titration: 5.0 ug/ml; Positive Control: Jurkat cell lysate; There is BioGPS gene expression data showing that SLC22A7 is expressed in Jurkat



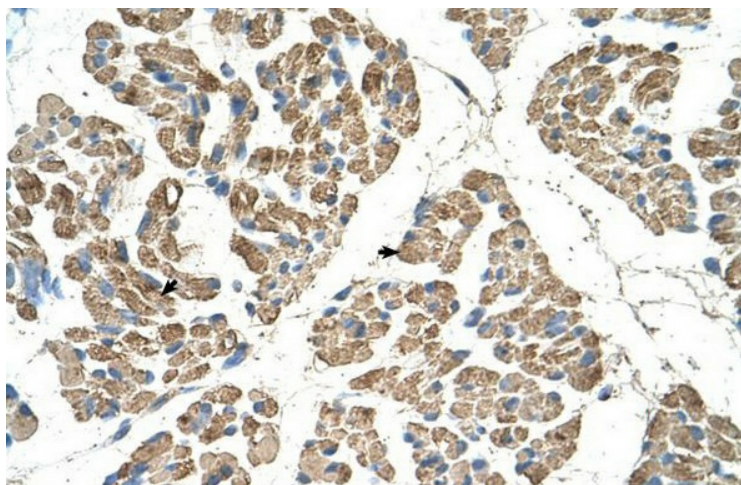
**Anti-SLC22A7 Western Blot & Peptide Block Validation**

Lysate: Jurkat Cell

Lane A: Primary Antibody  
Lane B: Primary Antibody + Blocking Peptide

Primary Antibody Concentration: 2.5µg/ml  
Peptide Concentration: 2.0µg/ml  
Lysate Quantity: 25µg/lane  
Gel Concentration: 12%

Host: Rabbit; Target Name: SLC22A7; Sample Tissue: Jurkat; Lane A: Primary Antibody; Lane B: Primary Antibody + Blocking Peptide; Primary Antibody Concentration: 2.5 ug/mL; Peptide Concentration: 2.0 ug/mL; Lysate Quantity: 25 ug/lane; Gel Concentration: 12% There is BioGPS gene expression data showing that SLC22A7 is expressed in Jurkat



Rabbit Anti-SLC22A7 Antibody; Paraffin  
Embedded Tissue: Human Muscle; Cellular Data:  
Skeletal muscle cells; Antibody Concentration:  
4.0-8.0 ug/ml; Magnification: 400X