

Product datasheet for **TA346434**

SLC17A3 Rabbit Polyclonal Antibody

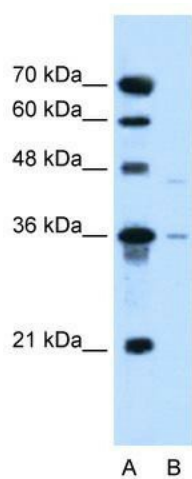
Product data:

Product Type:	Primary Antibodies
Applications:	WB
Recommended Dilution:	WB
Reactivity:	Human
Host:	Rabbit
Isotype:	IgG
Clonality:	Polyclonal
Immunogen:	The immunogen for anti-SLC17A3 antibody: synthetic peptide directed towards the middle region of human SLC17A3. Synthetic peptide located within the following region: FVVIYDDPVSYPWISTSEKEYIISLQKQVGGSSKQPLPIKAMLRSLPIWS
Formulation:	Liquid. Purified antibody supplied in 1x PBS buffer with 0.09% (w/v) sodium azide and 2% sucrose. <i>Note that this product is shipped as lyophilized powder to China customers.</i>
Purification:	Affinity Purified
Conjugation:	Unconjugated
Storage:	Store at -20°C as received.
Stability:	Stable for 12 months from date of receipt.
Predicted Protein Size:	46 kDa
Gene Name:	solute carrier family 17 member 3
Database Link:	NP_006623 Entrez Gene 10786 Human O00476
Background:	SLC17A3 may be involved in actively transporting phosphate into cells via Na(+) cotransport.
Synonyms:	NPT4
Note:	Immunogen Sequence Homology: Human: 100%; Horse: 85%; Bovine: 85%
Protein Families:	Transmembrane



[View online »](#)

Product images:



WB Suggested Anti-SLC17A3 Antibody Titration:
0.2-1 ug/ml; Positive Control: HepG2 cell lysate