

## Product datasheet for **TA346433**

### SAA4 Rabbit Polyclonal Antibody

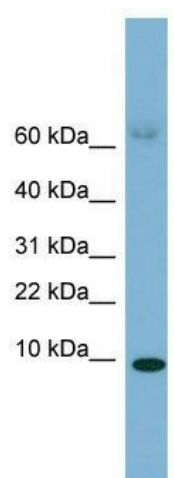
#### Product data:

Product Type:	Primary Antibodies
Applications:	WB
Recommended Dilution:	WB
Reactivity:	Human
Host:	Rabbit
Isotype:	IgG
Clonality:	Polyclonal
Immunogen:	The immunogen for anti-SAA4 antibody: synthetic peptide directed towards the middle region of human SAA4. Synthetic peptide located within the following region: RVYLQGLIDYYLFGNSSTVLEDSKSNEKAEEWGRSGKDPDRFRPDGLPKK
Formulation:	Liquid. Purified antibody supplied in 1x PBS buffer with 0.09% (w/v) sodium azide and 2% sucrose. <i>Note that this product is shipped as lyophilized powder to China customers.</i>
Purification:	Affinity Purified
Conjugation:	Unconjugated
Storage:	Store at -20°C as received.
Stability:	Stable for 12 months from date of receipt.
Predicted Protein Size:	2 kDa
Gene Name:	serum amyloid A4, constitutive
Database Link:	<a href="#">NP_006503</a> <a href="#">Entrez Gene 6291 Human P35542</a>
Background:	SAA4 is a major acute phase reactant. It is an Apolipoprotein of the HDL complex.
Synonyms:	C-SAA; CSAA
Note:	Immunogen Sequence Homology: Human: 100%; Pig: 85%; Bovine: 85%; Guinea pig: 79%; Mouse: 77%



[View online »](#)

## Product images:



WB Suggested Anti-SAA4 Antibody Titration: 0.2-1 ug/ml; ELISA Titer: 1: 1562500; Positive Control: Human Stomach